



山西原盛 - 管道解决方案供应商

管道连接器

COUPLINGS & FLANGED ADAPTORS

Universal Couplings &
Flanged Adaptors

Restrained Couplings &
Flanged Adaptors

Dedicated Couplings &
Flanged Adaptors

Gibaults

Quick Adaptors

Dismantling Joints

Saddle Clamps

More Pipe Connectors



www.syipipeline.com

源于用户 盛在品质 千锤百炼 精益求精

COMPANY INTRODUCTION

公司介绍

A PIPELINE
SOLUTION
PROVIDER!

管道解决方案
供应商

文水原盛管道有限公司：生产全系列管道产品和配件，包括铸管、管件、各种管接头、管卡、阀门、消防栓等。

自2009年以来，原盛管道从简单的铸管/管件生产销售商发展为专业管道项目解决方案的供应商，包括从铸管、管件、各种管接头、阀门、消防栓到水表和各种配件的一站式服务。

原盛管道年供应能力达到200,000吨，并在持续扩产中。

原盛管道视质量为企业成功不可分割的一部分。至今，我们已获得ISO 9001:2015 TUV、BSI风筝标记、SGS、BV、FM、UL和WRAS认证，并获得多个国家和政府部门的准入。生产“SYI”品牌产品已经成为高品质的标志！

除了供应产品外，原盛管道还帮助客户提供产品说明和安装指导。

SYI Pipeline Corporation - a Proud Member of SYI Group - manufactures a full range of pipeline products and accessories like pipes, fittings, universal couplings, flanged adaptors, restrained adaptors, dismantling joints, clamps, valves, fire hydrants and etc.

Since 2009, SYI Pipeline has developed from a single pipes & fittings seller to a professional project solution provider, including One-Stop Shop of pipes, fittings, couplings & flanged adaptors, valves, fire hydrants, water meters and all kinds of accessories.

SYI Pipeline has an annual supply capability of 200,000 tons, and it is still developing all the time.

SYI Pipeline regards quality as an essential and integral part of our business success. Until now, we are ISO 9001:2015 TUV, BSI Kitemark, SGS, BV, FM certified, and UL, WRAS listed. We are the approved supplier of many worldwide known countries and authorities. Manufacturing "SYI" Brand products has evolved as a mark of quality!

Along with products themselves, SYI Pipeline also helps customers with products instructions and installation guide.



Universal Couplings & Flanged Adaptors
广范围柔性接头和法兰接头

P 07



Restrained Couplings & Flanged Adaptors
限制性接头和法兰接头

P 10



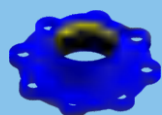
Dedicated Couplings & Flanged Adaptors
专用柔性接头和法兰接头

P 13



Gibaults
PVC管柔性接头

P 18



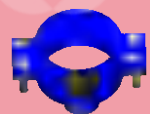
Quick Adaptors
快速接头

P 21



Dismantling Joints
可拆卸接头

P 27



Saddle Clamps
马鞍管卡

P 32



More pipe connectors
更多管道连接器

P 37

New designs & patterns could be developed based on customers' requirements.

工艺流程 PRODUCTION PROCESSES



① 模具制作



② 砂处理



③ 造型



④ 浇铸



⑤ 打磨 & 抛丸



⑥ 机加工



⑦ 静电喷涂



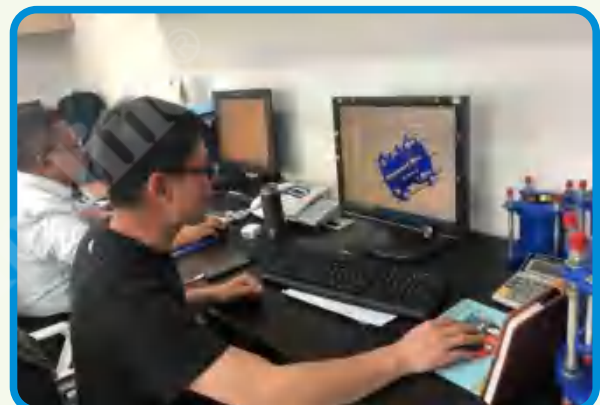
⑧ 装配



⑨ 包装

设计 DESIGN

- ◆ 山西原盛持续致力于追求性能更好、操作更简便、成本更低廉的管接头系列产品设计。
SYI keeps designing the series of pipe connectors to pursue the better performance, easier operation and lower cost.
- ◆ 可根据您的要求进行新设计和模具开发。
New designs and patterns could be developed based on your request.
- ◆ 所有设计100%通过型式试验。
All the new designs and products 100% pass Type Test.



技术说明 SPECIFICATIONS

柔性接头及法兰接头，用于连接各种材质的管道：球铁、灰铁、钢、PVC-U、PE、纤维水泥或其他坚硬材料，具有广范围和良好的柔性。机械柔性接头非常适合于平端管道，安装和拆卸方便快捷。允许管道 ± 3 度偏转，允许管道在连接后正常运动(如地面沉降等)，管道敷设时的范围和偏转角度可适用于较大的弯曲半径。

该系列不需要特殊技能或复杂的工具来安装，一个适当校准的扭矩扳手是唯一需要的专业工具。旋转法兰螺栓孔轻便、紧凑的设计提供了更容易的操作和更快的安装。

完美的性能使其越来越多地被广泛应用于承压或不承压、地上或地下的输水、液体或输气管道的维修或永久使用之中，包括泵站、水处理厂、污水处理厂、厂房、仪表室、发电设备、加油站等。

SYI 生产的柔性接头及法兰接头的件体由球墨铸铁制成，密封胶圈为E.P.D.M./NBR/SBR，符合 EN 14525、ANSI/AWWA C219及原盛集团内部的设计标准。安装快速、便于拆卸，节省整个管线工程的安装时间。而特定材料或用途的专用柔性接头及法兰接头，其性能则更为专业化。

Couplings and flanged adaptors, are used to connect the pipes of various materials: ductile iron, gray iron, steel, PVC-U, PE, fibre-cement or other rigid materials with wide range tolerance on O.D. and full flexibility. The mechanical flexible joint is well suited for the installation of the plain-ended pipelines by quick and easy installation and disassembly. The connection allows pipeline ± 3 degree deviation, which can allow the normal movement in the pipeline after connecting (such as ground subsidence etc.), the ranges and the deflection angle in the laying of pipelines can be applied in large bending radius.

The range requires no special skills or complicated tools to install. A suitable calibrated torque wrench is the only specialist tool required. The ability to rotate the flange bolt holes, the light-weight and the compact design provide easier handling and quicker installation.

The perfect performance makes SYI products more and more popular in repairing or permanent situations of the pipelines for water, other liquids, or gas, with or without pressure, installed below or above ground, including pump stations, water treatment plants, sewage treatment plants, plant rooms, instrument rooms, power generation equipments, gas stations, etc.

The body of couplings and flanged adaptors manufactured by SYI is made from ductile iron, the sealing gaskets are E.P.D.M./NBR/SBR, in accordance with EN 14525, ANSI/AWWA C219 and SYI Group Internal Design Standard. Quick to install and easy to dismantle, save the installation time of the whole pipeline project. And the Dedicated Couplings & Flanged Adaptors for the given materials or uses make the performances further more professional.

材质 MATERIALS

件体 BODY	Ductile iron grade 500-7/450-10 in accordance with ISO 1083 or 70-50-05/65-45-12 with ASTM A536
压兰 GLAND	Ductile iron grade 500-7/450-10 in accordance with ISO 1083 or 70-50-05/65-45-12 with ASTM A536
胶圈 GASKET	Rubber E.P.D.M./SBR/NR in accordance with EN 681.1
夹紧环 GRIPING RING	Brass
螺栓螺母 BOLTS AND NUTS	Carbon steel grade 8.8/6.8/4.8 with dacromet coating / galvanization; Stainless Steel bolts are available also according to customers' requirement.

涂层 COATING

- 符合BS 6920-1标准的静电环氧喷涂 (FBE coating according to BS 6920-1)
- 对运输、储存、现场和腐蚀损伤具有极佳的保护作用 (Excellent protection from transportation, storage, site and corrosion damage)
- 适用于饮用水 (Suitable for potable water)
- 英国WRAS证书 (WRAS Certificate)



如需特殊涂层要求，请咨询我们。

Special coating requirements, PLEASE CONSULT US.



山西原盛

广范围柔性接头和法兰接头

Universal Couplings & Flanged Adaptors

SYI-UC & SYI-FA

EN 14525, ANSI/AWWA C219

- 工作压力: 16 bar 或 250 psi
Working Pressure: 16 bar or 250 psi

- 采用优质材料制成的特殊异形胶圈
Specially profiled gaskets by high quality material

- 安装顺畅
Smooth installation
- 有效防脱
Restrict to pull out
- 允许管子的热胀冷缩 (每个胶圈可达5mm)
Allow thermal expansion and contraction of the pipe (up to 5mm per gasket)

- 更合理的连接范围
More reasonable sizes and ranges

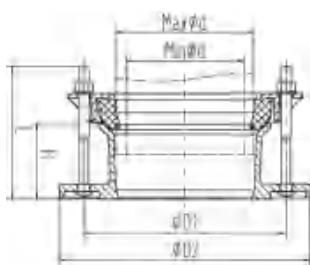
- 范围广
Wide range tolerance on O.D. (up to 24mm)
- 适用于不同的管材或外径
For different materials or outside diameters
- 使主要的管材尺寸处于最合理的位置
Put the pipe's major sizes within the most reasonable positions
- 安装后胶圈处于最佳状态
The gasket is at the perfect situation after assembled
- 减小因连接管材尺寸处于最小连接范围时的泄露风险
Reduced risk of leakage when the pipe OD at the minimum range
- 减少紧螺栓的工作量
Reduced workload during tightening the bolts hardly



- 宽法兰密封面
Wide flange sealing surface

- D 型螺栓避免紧螺栓时旋转
D Bolts to avoid turning during tightening the bolts

广范围 法兰接头 Universal Flanged Adaptors SYI-FA PN10/16

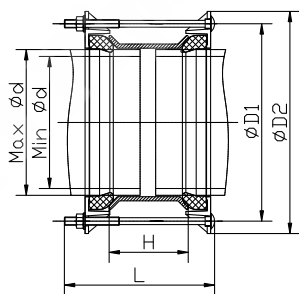


SYI S. N.	DN		Pipe O.D. range	D1	D2	H	L	Bolt	
	mm	inch		mm				no.	size
SYI-FA44-60	40	1.5"	44-60	121	146	75	140	2	M12x140
SYI-FA48-64	50	2"	48-64	125	162	75	140	2	
SYI-FA56-74	50	2"	56-74	135	162	75	140	2	
SYI-FA56-74	60/65	2.5"	56-74	137	182	75	140	4	
SYI-FA72-88	65	2.5"	72-88	151	182	75	140	4	
SYI-FA85-105	80	3"	85-105	174	198	80	140	4	
SYI-FA85-105	100	4"	85-105	174	218	80	140	4	
SYI-FA98-118	100	4"	98-118	187	218	80	140	4	
SYI-FA108-128	100	4"	108-128	197	218	80	140	4	
SYI-FA108-128	125	5"	108-128	201	248	85	160	4	M12x160
SYI-FA123-145	125	5"	123-145	218	248	85	160	4	
SYI-FA132-154	125	5"	132-154	227	248	85	160	4	
SYI-FA132-154	150	6"	132-154	227	282	85	160	4	
SYI-FA157-181	150	6"	157-181	255	282	85	160	4	
SYI-FA192-212	200	8"	192-212	287	338	85	160	4	
SYI-FA215-235	200	8"	215-235	310	338	85	160	4	
SYI-FA222-246	250	10"	222-246	323	398	85	160	6	
SYI-FA246-268	250	10"	246-268	345	398	85	160	6	
SYI-FA267-289	250	10"	267-289	366	398	85	160	6	
SYI-FA276-298	250	10"	276-298	375	400	85	160	6	
SYI-FA308-332	300	12"	308-332	411	453	90	160	6	
SYI-FA322-346	300	12"	322-346	426	455	90	160	6	
SYI-FA344-368	350	14"	344-368	448	518	90	160	8	
SYI-FA367-391	350	14"	367-391	471	518	90	160	8	
SYI-FA392-416	400	16"	392-416	498	578	90	160	8	
SYI-FA417-439	400	16"	417-439	520	578	90	160	8	
SYI-FA436-458	400	16"	436-458	539	578	90	160	8	
SYI-FA436-458	450	18"	436-458	540	638	90	160	10	
SYI-FA474-496	450	18"	474-496	578	638	90	160	10	
SYI-FA490-512	500	20"	490-512	597	712	90	160	10	
SYI-FA524-546	500	20"	524-546	631	712	90	160	10	
SYI-FA540-562	500	20"	540-562	647	712	90	160	10	
SYI-FA597-617	600	24"	597-617	703	838	100	160	10	
SYI-FA619-639	600	24"	619-639	725	838	100	160	10	
SYI-FA628-650	600	24"	628-650	736	838	100	160	10	

注：对于以上未提及的尺寸，请与我们联系。我们有权在不另行通知的情况下更改数据。

NOTE: For other sizes not mentioned above, please contact us. We have right to change the data without further notice.

广范围 柔性接头 Universal Couplings SYI-UC



SYI S. N.	DN		Pipe O.D. range	D1	D2	H	L	Bolt	
	mm	inch	mm					no.	size
SYI-UC44-60	40	1.5"	44-60	121	151	100	200	2	M12x200
SYI-UC48-64	50	2"	48-64	125	155	100	200	2	
SYI-UC56-74	50	2"	56-74	135	169	100	200	2	
SYI-UC72-88	65	2.5"	72-88	151	183	100	200	4	
SYI-UC85-105	80	3"	85-105	174	206	100	200	4	
SYI-UC98-118	100	4"	98-118	187	219	100	200	4	
SYI-UC108-128	125	5"	108-128	197	233	100	200	4	
SYI-UC123-145	125	5"	123-145	218	250	100	200	4	
SYI-UC132-154	150	6"	132-154	227	259	100	200	4	M12x220
SYI-UC157-181	150	6"	157-181	255	289	115	220	4	
SYI-UC192-212	200	8"	192-212	287	321	115	220	4	
SYI-UC215-235	200	8"	215-235	310	344	115	220	4	
SYI-UC222-246	250	10"	222-246	323	358	115	220	6	
SYI-UC246-268	250	10"	246-268	345	380	115	220	6	
SYI-UC267-289	250	10"	267-289	366	401	115	220	6	
SYI-UC276-298	250	10"	276-298	375	410	115	220	6	
SYI-UC308-332	300	12"	308-332	411	446	150	260	6	M12x260
SYI-UC322-346	300	12"	322-346	426	462	150	260	6	
SYI-UC344-368	350	14"	344-368	448	484	150	260	8	
SYI-UC367-391	350	14"	367-391	471	507	150	260	8	
SYI-UC392-416	400	16"	392-416	498	534	150	260	8	
SYI-UC417-439	400	16"	417-439	520	556	150	260	8	
SYI-UC436-458	400	16"	436-458	540	576	150	260	8	
SYI-UC474-496	450	18"	474-496	578	614	150	260	10	
SYI-UC490-512	500	20"	490-512	597	633	160	300	10	M12x300
SYI-UC524-546	500	20"	524-546	631	667	160	300	10	
SYI-UC540-562	500	20"	540-562	647	683	160	300	10	
SYI-UC597-617	600	24"	597-617	703	739	160	300	10	
SYI-UC619-639	600	24"	619-639	725	761	160	300	10	
SYI-UC628-650	600	24"	628-650	736	772	160	300	10	

注：对于以上未提及的尺寸，请与我们联系。我们有权在不另行通知的情况下更改数据。

NOTE: For other sizes not mentioned above, please contact us. We have right to change the data without further notice.

PE管限制性接头和法兰接头

Restrained Couplings & Flanged Adaptors for PE pipes

SYI-RC & SYI-RFA

EN 14525, ANSI/AWWA C219

- 工作压力：16 bar 或 250 psi
Working Pressure: 16 bar or 250 psi



- 紧凑型：更轻便、更简便、更低成本
COMPACT TYPE: Lighter, Easier and Lower Cost!

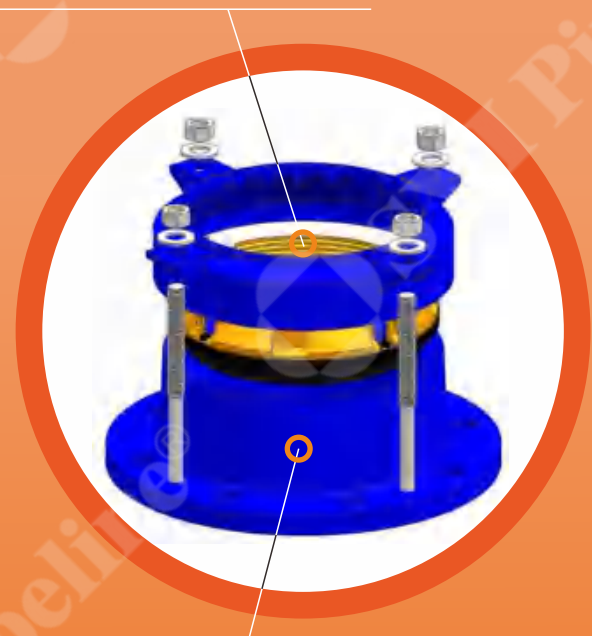


- 满足简便、高性能的连接聚乙烯管的末端限制性机械连接方法的需求
In response to demand for a simple, high performance end load restraint mechanical method of joining polyethylene pipe



- 铜制夹紧环和密封胶圈组合
Combination of Brass Gripping Ring and Sealing Gaskets

- 支撑和夹紧聚乙烯管，防止管道塌陷和拔出
Support and grip PE pipe to prevent pipe collapse and pullout
- 更简便的安装和更优良的性能
Easier installation and higher performance



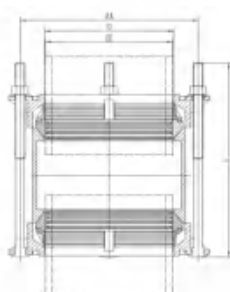
- 没有中心停止或阻塞的滑入式连接
Slip-on coupling without centre stop or obstruction

- 维修现有管道变得更容易,不需要拆装产品即可安装
Easier repairs to existing pipelines without dismantling the products

PE管限制性接头

Restrained Couplings for PE pipes

SYI-RC



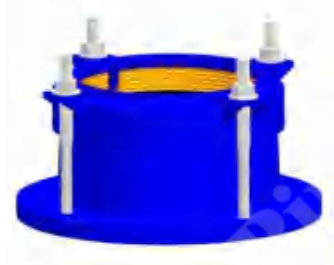
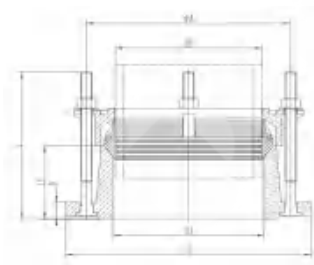
SYI S. N.	OD	ID	A	Bolt	
	mm			no.	size
SYI-RC50	50	54.7	160	2	M12
SYI-RC63	63	65	165	4	
SYI-RC75	75	79	177	4	
SYI-RC90	90	94.5	193	4	
SYI-RC110	110	114.5	214	4	
SYI-RC125	125	128	229	4	
SYI-RC140	140	145	245	4	
SYI-RC160	160	164.5	272	4	
SYI-RC180	180	184	285	4	
SYI-RC200	200	205	314	4	
SYI-RC225	225	230	332	4	
SYI-RC250	250	255	365	6	
SYI-RC280	280	287	377	6	
SYI-RC315	315	320	431	6	

注：对于以上未提及的尺寸，请与我们联系。我们有权在不另行通知的情况下更改数据。

NOTE: For other sizes not mentioned above, please contact us. We have right to change the data without further notice.

PE管限制性法兰接头

Restrained Flanged Adaptors for PE pipes
SYI-RFA PN10/16



SYI S. N.	DN	OD	D3	D	b	L1	Bolt	
	mm						no.	size
SYI-RFA5050	50	50	54.4	185	16	61	2	M12
SYI-RFA5063	50	63	78	188	18	63	4	
SYI-RFA60/6563/75	60/65	63/75	92	187	17	65	4	
SYI-RFA8090	80	90	105	203	17	67	4	
SYI-RFA100110	100	110	126	221	16	66.5	4	
SYI-RFA100125	100	125	123	223	19	67	4	
SYI-RFA125125	125	125	144	252	19	67	4	
SYI-RFA125140	125	140	156	253	19	67	4	
SYI-RFA150160	150	160	177	288	16	65.3	4	
SYI-RFA150180	150	180	171	285	18	78	4	
SYI-RFA200200	200	200	217	340	17.5	77	4	
SYI-RFA200225	200	225	214	340	17	89	4	
SYI-RFA250250	250	250	268	400	18.5	89	6	
SYI-RFA250280	250	280	275	400	20	88	6	
SYI-RFA300315	300	315	334	457	20	90	6	

注：对于以上未提及的尺寸，请与我们联系。我们有权在不另行通知的情况下更改数据。

NOTE: For other sizes not mentioned above, please contact us. We have right to change the data without further notice.

球铁管专用柔性接头和法兰接头

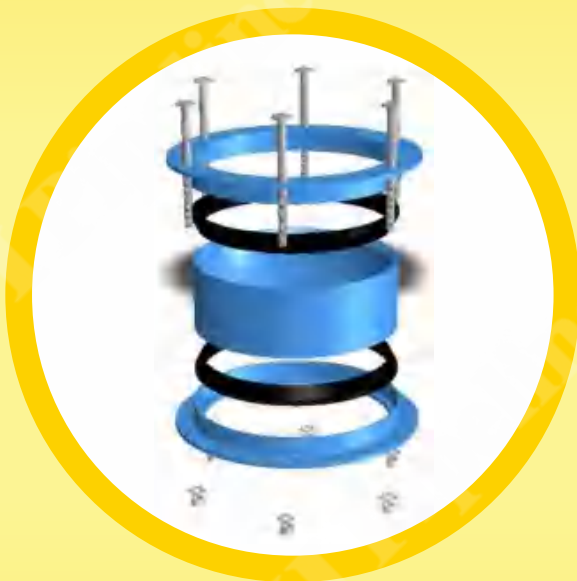
Dedicated Couplings & Flanged Adaptors for Ductile Iron Pipes ISO 2531/EN 545

SYI-DC & SYI-DFA

EN 14525, ANSI/AWWA C219

- 工作压力: 16 bar 或 250 psi

Working Pressure: 16 bar or 250 psi



- 宽法兰密封面

Wide flange sealing surface

专用柔性接头及法兰接头，专用于连接球墨铸铁管(可达DN2200)，如工程项目有特殊要求，我们也可按要求进行设计、开发和生产。

在给定连接管材质的情况下，采用专用柔性接头和法兰接头，使其性能更加专业，施工成本更加经济。

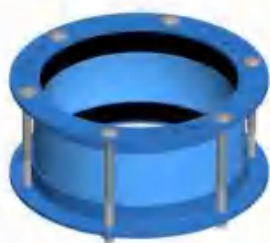
Dedicated Couplings & Flanged Adaptors are dedicated to connect the ductile iron pipe (upto DN2200). If any special demand for the project, we can design, develop and produce according to the requirement also.

When the material of the connecting pipes is given, the Dedicated Couplings & Flanged Adaptors make the performances more professional and construction cost more economic.

球铁管专用柔性接头

Dedicated Couplings for Ductile Iron Pipes ISO 2531/EN 545

SYI-DC



SYI S. N.	DN	Pipe O.D.	O.D. Tolerance		D2	H	L	Min. pipe end prepared length
	mm							
DC40	40	56	1	-3	120	102	166	100
DC50	50	66	1	-3	126	102	166	100
DC60	60	77	1	-3	135	102	166	100
DC65	65	82	1	-3	156	102	166	100
DC80	80	98	1	-3	184	102	166	100
DC100	100	118	1	-3	205	102	166	100
DC125	125	144	1	-3	232	102	166	100
DC150	150	170	1	-3	264	102	173	100
DC200	200	222	1	-3.5	315	102	173	100
DC250	250	274	1	-3.5	374	102	173	100
DC300	300	326	1	-3.5	426	102	173	100
DC350	350	378	1	-3.5	494	152	254	150
DC400	400	429	1	-4	544	152	254	150
DC450	450	480	1	-4	595	152	254	150
DC500	500	532	1	-4	650	152	254	150
DC600	600	635	1	-4.5	753	152	254	150
DC700	700	738	1	-4.5	858	152	254	150
DC800	800	842	1	-4.5	962	152	254	150
DC900	900	945	1	-5	1070	178	280	150
DC1000	1000	1048	1	-5	1173	178	280	150
DC1100	1100	1152	1	-6	1282	178	280	150
DC1200	1200	1255	1	-6	1385	178	280	150
DC1400	1400	1462	1	-6	1592	178	295	150
DC1500	1500	1565	1	-6	1691	178	295	150
DC1600	1600	1668	1	-6	1798	178	295	150
DC1800	1800	1875	1	-6	2015	254	375	150/300
DC2000	2000	2082	1	-6	2222	254	375	150/300
DC2200	2200	2288	1	-6	2415	254	375	150/300

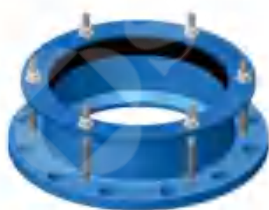
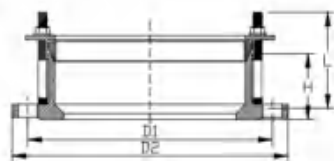
注：对于以上未提及的尺寸，请与我们联系。我们有权在不另行通知的情况下更改数据。

NOTE: For other sizes not mentioned above, please contact us. We have right to change the data without further notice.

球铁管专用法兰接头 PN10

Dedicated Flanged Adaptors for Ductile Iron Pipes ISO 2531/EN 545

SYI-DFA PN10



SYI S. N.	DN	Pipe O.D.	O.D. Tolerance		D2	H	L	Min. pipe end prepared length
	mm							
DFA40P0	40	56	1	-3	150	73	100	100
DFA60P0	60	77	1	-3	175	73	100	100
DFA125P0	125	144	1	-3	250	76	110	100
DFA200P0	200	222	1	-3.5	340	76	110	100
DFA250P0	250	274	1	-3.5	400	90	120	100
DFA300P0	300	326	1	-3.5	455	90	120	100
DFA350P0	350	378	1	-3.5	505	110	145	150
DFA400P0	400	429	1	-4	565	110	145	150
DFA450P0	450	480	1	-4	615	110	145	150
DFA500P0	500	532	1	-4	670	115	150	150
DFA600P0	600	635	1	-4.5	780	115	150	150
DFA700P0	700	738	1	-4.5	895	115	150	150
DFA800P0	800	842	1	-4.5	1015	115	150	150
DFA900P0	900	945	1	-5	1115	115	150	150
DFA1000P0	1000	1048	1	-5	1230	115	150	150
DFA1100P0	1100	1152	1	-6	1340	130	180	150
DFA1200P0	1200	1255	1	-6	1455	130	180	150
DFA1400P0	1400	1462	1	-6	1675	130	180	150
DFA1500P0	1500	1565	1	-6	1785	180	240	150
DFA1600P0	1600	1668	1	-6	1915	190	240	150
DFA1800P0	1800	1875	1	-6	2115	190	275	150
DFA2000P0	2000	2082	1	-6	2325	190	275	150/300
DFA2200P0	2200	2288	1	-6	2550	210	315	150/300

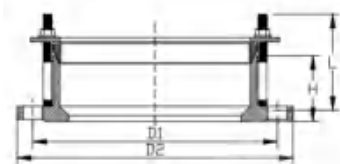
注：对于以上未提及的尺寸，请与我们联系。我们有权在不另行通知的情况下更改数据。

NOTE: For other sizes not mentioned above, please contact us. We have right to change the data without further notice.

球铁管专用法兰接头 PN16

Dedicated Flanged Adaptors for Ductile Iron Pipes ISO 2531/EN 545

SYI-DFA PN16



SYI S. N.	DN	Pipe O.D.	O.D. Tolerance		D2	H	L	Min. pipe end prepared length
	mm							
DFA40P1	40	56	1	-3	150	73	100	100
DFA60P1	60	77	1	-3	175	73	100	100
DFA125P1	125	144	1	-3	250	76	110	100
DFA200P1	200	222	1	-3.5	340	76	110	100
DFA250P1	250	274	1	-3.5	400	90	120	100
DFA300P1	300	326	1	-3.5	455	90	120	100
DFA350P1	350	378	1	-3.5	520	110	145	150
DFA400P1	400	429	1	-4	580	110	145	150
DFA450P1	450	480	1	-4	640	110	145	150
DFA500P1	500	532	1	-4	715	115	150	150
DFA600P1	600	635	1	-4.5	840	115	150	150
DFA700P1	700	738	1	-4.5	910	115	150	150
DFA800P1	800	842	1	-4.5	1025	115	150	150
DFA900P1	900	945	1	-5	1125	115	150	150
DFA1000P1	1000	1048	1	-5	1255	115	150	150
DFA1100P1	1100	1152	1	-6	1355	130	180	150
DFA1200P1	1200	1255	1	-6	1485	130	180	150
DFA1400P1	1400	1462	1	-6	1685	130	180	150
DFA1500P1	1500	1565	1	-6	1820	180	240	150
DFA1600P1	1600	1668	1	-6	1930	190	240	150
DFA1800P1	1800	1875	1	-6	2130	190	275	150
DFA2000P1	2000	2082	1	-6	2345	190	275	150/300
DFA2200P1	2200	2288	1	-6	2555	210	315	150/300

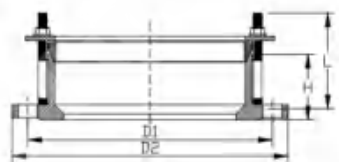
注：对于以上未提及的尺寸，请与我们联系。我们有权在不另行通知的情况下更改数据。

NOTE: For other sizes not mentioned above, please contact us. We have right to change the data without further notice.

球铁管专用法兰接头 PN25

Dedicated Flanged Adaptors for Ductile Iron Pipes ISO 2531/EN 545

SYI-DFA PN25



SYI S. N.	DN	Pipe O.D.	O.D. Toleran ce		D2	H	L	Min. pipe end prepared length
	mm							
DFA50P2	50	66	1	-3	165	73	100	100
DFA65P2	65	82	1	-3	185	73	100	100
DFA80P2	80	98	1	-3	200	73	100	100
DFA100P2	100	118	1	-3	220	73	100	100
DFA150P2	150	170	1	-3	285	76	110	100
DFA250P2	250	274	1	-3.5	425	90	120	100
DFA300P2	300	326	1	-3.5	485	90	120	100
DFA350P2	350	378	1	-3.5	555	110	145	150
DFA400P2	400	429	1	-4	620	110	145	150
DFA450P2	450	480	1	-4	670	110	145	150
DFA500P2	500	532	1	-4	730	115	150	150
DFA600P2	600	635	1	-5	845	115	150	150
DFA700P2	700	738	1	-5	960	115	150	150
DFA800P2	800	842	1	-5	1085	115	150	150
DFA900P2	900	945	1	-5	1185	115	150	150
DFA1000P2	1000	1048	1	-5	1320	115	150	150
DFA1200P2	1200	1255	1	-6	1530	130	180	150
DFA1400P2	1400	1462	1	-6	1755	130	180	150
DFA1600P2	1600	1668	1	-6	1975	190	240	150

注：对于以上未提及的尺寸，请与我们联系。我们有权在不另行通知的情况下更改数据。

NOTE: For other sizes not mentioned above, please contact us. We have right to change the data without further notice.

PVC管柔性接头

Gibaults

SYI-GB

EN 14525, ANSI/AWWA C219

- 工作压力: 16 bar 或 250 psi
Working Pressure: 16 bar or 250 psi



- 不需要拆装产品即可安装
No need to dismantle products to install



- 紧凑型: 更轻便、更简便、更低成本
COMPACT TYPE: Lighter, Easier and Lower Cost!



SYI PVC管柔性接头由SYI资深工程师于2020年开发，是专门连接PVC管的机械柔性连接方式，可以快速简便地进行安装和拆卸。

没有中心停止或阻塞的滑入式连接使维修现有管道变得更容易。不需要拆装产品即可安装。

该系列不需要特殊技能或复杂的工具来安装，一个适当校准的扭矩扳手是唯一需要的专业工具。旋转法兰螺栓孔的能力和轻便、紧凑的设计提供了更容易的操作和更快的安装。

SYI Gibaults, developed by SYI experienced engineers in 2020, are dedicated to connect the PVC pipes for quick and easy installation and disassembly.

Slip-on coupling without centre stop or obstruction makes it easier to repair existing pipelines. No need to dismantle products to install.

The range requires no special skills or complicated tools to fit. A suitable calibrated torque wrench is the only specialist tool required. The ability to rotate the flange bolt holes and the lightweight provide easier handling and quicker installation.

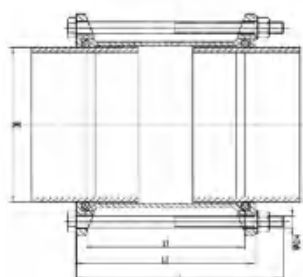
PVC管柔性接头

Gibaults

SYI-GB

O型圈

O Ring



SYI S. N.	OD	L1	L2	Bolt	
	mm			no.	size
SYI-GB50	50	110	137	2	M12*170
SYI-GB63	63	114	142	2	
SYI-GB75	75	114	143	2	
SYI-GB90	90	118	144	3	
SYI-GB110	110	124	150	3	M12*200
SYI-GB125	125	133	159	3	
SYI-GB140	140	137	164	4	
SYI-GB160	160	145	174	4	
SYI-GB200	200	157	187	4	M12*230
SYI-GB225	225	167	200	5	
SYI-GB250	250	185	219	5	M12*260
SYI-GB280	280	195	230	6	
SYI-GB315	315	195	234	6	
SYI-GB355	355	241	281	7	M12*330
SYI-GB400	400	255	305	7	
SYI-GB450	450	255	305	8	
SYI-GB500	500	255	306	8	

注：对于以上未提及的尺寸，请与我们联系。我们有权在不另行通知的情况下更改数据。

NOTE: For other sizes not mentioned above, please contact us. We have right to change the data without further notice.

用于灌溉PVC管柔性接头

Gibaults for Irrigation

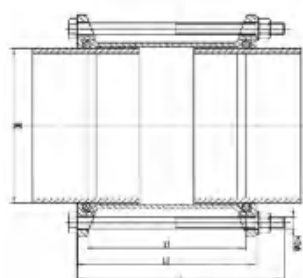
SYI-GBI

材质: DI或CI

涂层: 内外涂沥青

Material of body: DI or CI

Coating: Bitumen inside and outside



SYI S. N.	OD	L1	L2	Bolt	
	mm			no.	size
SYI-GBI63	63	98	126	2	M10*180
SYI-GBI75	75	105	133	2	
SYI-GBI90	90	110	138	2	
SYI-GBI110	110	115	145	3	M10*200
SYI-GBI125	125	125	155	3	
SYI-GBI140	140	127	157	3	
SYI-GBI160	160	133	163	3	M12*220
SYI-GBI180	180	139	172	4	
SYI-GBI200	200	145	178	4	M12*230
SYI-GBI225	225	153	188	5	
SYI-GBI250	250	171	208	5	M12*250
SYI-GBI315	315	191	232	6	M12*280
SYI-GBI400	400	130	282	7	M12*330
SYI-GBI500	500	230	327	8	

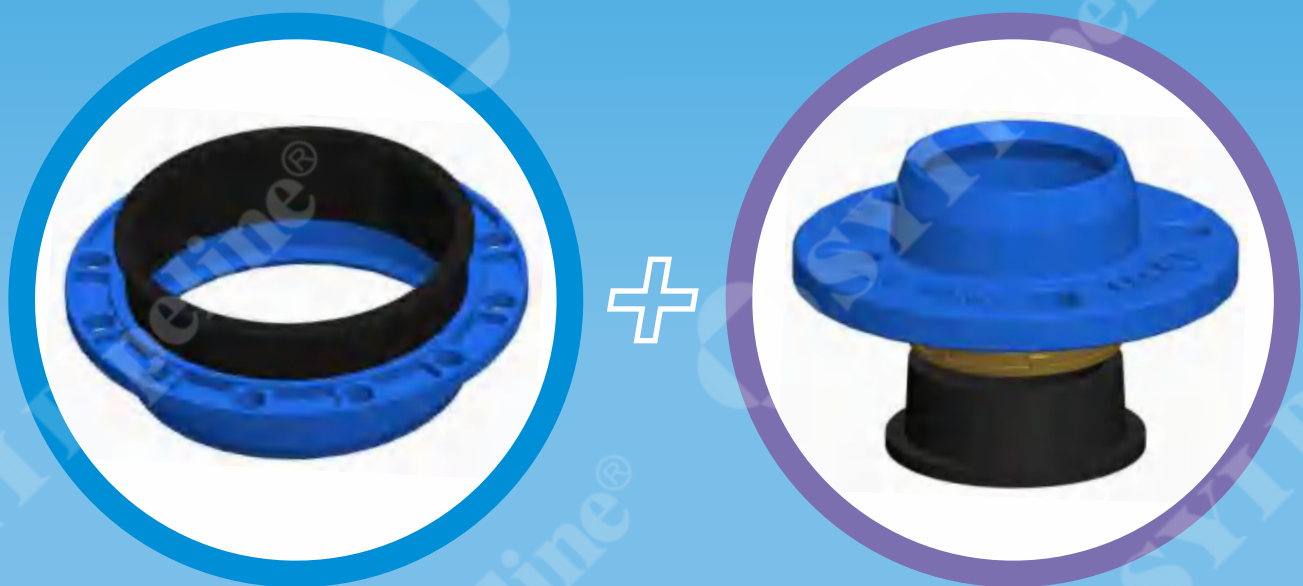
注: 对于以上未提及的尺寸, 请与我们联系。我们有权在不另行通知的情况下更改数据。

NOTE: For other sizes not mentioned above, please contact us. We have right to change the data without further notice.

快速接头

Quick Adaptors

SYI-QA



SYI快速接头，专门用于相同外径的uPVC管与法兰产品的连接，加上夹紧环也可用于PE管。

连接PVC管时，可以通过承口内相应的胶圈直接滑入式连接。连接PE管时，夹紧环能同时保证管端保持和紧固防脱。

SYI快速接头使法兰和uPVC/PE/球铁管之间的连接更快速、更简便，并且以更低成本取代法兰承口和法兰连接器。在使用性能更优良的基础上，兼顾采购、施工成本经济性。

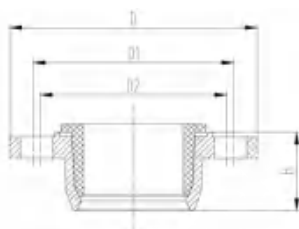
SYI-QA, is used for connecting uPVC pipes with flanged products, and also for PE pipes with the gripping ring of same outside diameter.

When connecting the uPVC pipes, it can joint by push-in directly through the gasket. When connecting the PE pipes, the gripping ring can simultaneously ensure pipe end retention and tightness, and restrict to pull out.

SYI-QA makes the connection between flange and uPVC/PE/DI pipes quicker, easier, with lower cost instead of Flanged Socket or Flanged Adaptors. On the basis of better performance, the economic cost of procurement and construction have also been taken into account.

PVC快速接头

Quick Adaptors for uPVC pipes
SYI-QAPVC PN10/16



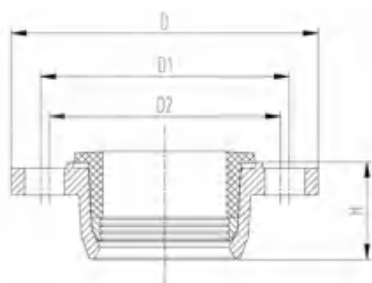
SYI S. N.	DN	OD	D	D1	D2	H
	mm					
SYI-QAPVC4050	40	50	150	120	110	52
SYI-QAPVC5050	50	50	165	135	125	52
SYI-QAPVC5063	50	63	165	135	125	54
SYI-QAPVC60/6563	60/65	63	185	145	135	54
SYI-QAPVC60/6575	60/65	75	185	145	135	57
SYI-QAPVC8075	80	75	200	165	155	57
SYI-QAPVC8090	80	90	200	165	155	60
SYI-QAPVC10090	100	90	220	190	180	60
SYI-QAPVC100110	100	110	220	190	180	64
SYI-QAPVC125125	125	125	250	218	210	72
SYI-QAPVC125140	125	140	250	218	210	76
SYI-QAPVC150160	150	160	285	248	240	80
SYI-QAPVC200180	200	180	340	294	304	86
SYI-QAPVC200200	200	200	340	294	304	90
SYI-QAPVC200225	200	225	340	294	304	90
SYI-QAPVC250250	250	250	400	360	350	92
SYI-QAPVC300280	300	280	455	414	402	98

注：对于以上未提及的尺寸，请与我们联系。我们有权在不另行通知的情况下更改数据。

NOTE: For other sizes not mentioned above, please contact us. We have right to change the data without further notice.

PE快速接头

Quick Adaptors for PE pipes
SYI-QAPE PN10/16



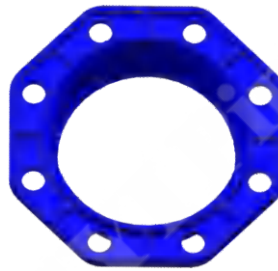
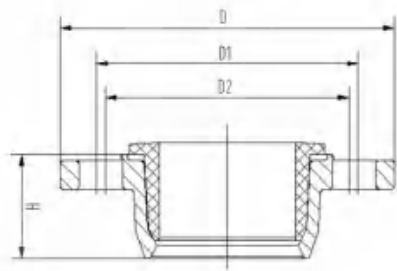
SYI S. N.	DN	OD	D	D1	D2	H
	mm					
SYI-QAPE4050	40	50	150	120	110	52
SYI-QAPE5050	50	50	165	135	125	52
SYI-QAPE5063	50	63	165	135	125	54
SYI-QAPE60/6563	60/65	63	185	145	135	54
SYI-QAPE60/6575	60/65	75	185	145	135	57
SYI-QAPE8075	80	75	200	165	155	57
SYI-QAPE8090	80	90	200	165	155	60
SYI-QAPE10090	100	90	220	190	180	60
SYI-QAPE100110	100	110	220	190	180	64
SYI-QAPE125125	125	125	250	218	210	72
SYI-QAPE125140	125	140	250	218	210	76
SYI-QAPE150160	150	160	285	248	240	80
SYI-QAPE200180	200	180	340	294	304	86
SYI-QAPE200200	200	200	340	294	304	90
SYI-QAPE200225	200	225	340	294	304	90
SYI-QAPE250250	250	250	400	360	350	92
SYI-QAPE300280	300	280	455	414	402	98

注：对于以上未提及的尺寸，请与我们联系。我们有权在不另行通知的情况下更改数据。

NOTE: For other sizes not mentioned above, please contact us. We have right to change the data without further notice.

球铁管快速接头

Quick Adaptors for DI pipes
SYI-QADI PN10/16



SYI S. N.	DN	OD	D	D1	D2	H
	mm					
SYI-QADI8098	80	98	150	120	110	49
SYI-QADI100118	100	118	165	135	125	56
SYI-QADI125144	125	144	165	135	125	63
SYI-QADI150170	150	170	185	145	135	70
SYI-QADI200222	200	222	185	145	135	77
SYI-QADI250274	250	274	200	165	155	87
SYI-QADI300326	300	326	200	165	155	97

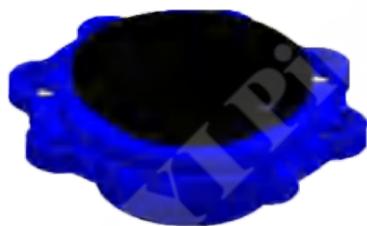
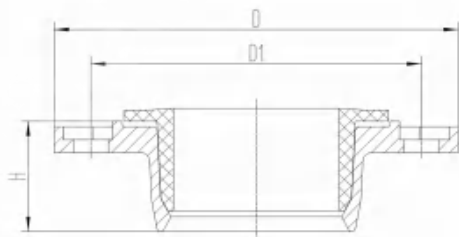
注：对于以上未提及的尺寸，请与我们联系。我们有权在不另行通知的情况下更改数据。

NOTE: For other sizes not mentioned above, please contact us. We have right to change the data without further notice.

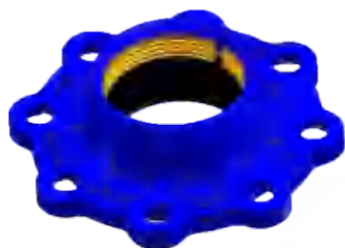
紧凑型PVC (PE) 快速接头

Compact Quick Adaptors for uPVC (PE) pipes

SYI-CQAPVC (PE) PN10/16



SYI-CQAPVC



SYI-CQAPE

SYI S. N.	DN	OD	D	D1	D2	H
	mm					
SYI-QAPVC4050	40	50	150	120	110	52
SYI-QAPVC5050	50	50	165	135	125	52
SYI-QAPVC5063	50	63	165	135	125	54
SYI-QAPVC60/6563	60/65	63	185	145	135	54
SYI-QAPVC60/6575	60/65	75	185	145	135	57
SYI-QAPVC8075	80	75	200	165	155	57
SYI-QAPVC8090	80	90	200	165	155	60
SYI-QAPVC10090	100	90	220	190	180	60
SYI-QAPVC100110	100	110	220	190	180	64
SYI-QAPVC125125	125	125	250	218	210	72
SYI-QAPVC125140	125	140	250	218	210	76
SYI-QAPVC150160	150	160	285	248	240	80
SYI-QAPVC200180	200	180	340	294	304	86
SYI-QAPVC200200	200	200	340	294	304	90
SYI-QAPVC200225	200	225	340	294	304	90
SYI-QAPVC250250	250	250	400	360	350	92
SYI-QAPVC300280	300	280	455	414	402	98

SYI S. N.	DN	OD	D	D1	D2	H
	mm					
SYI-QAPE4050	40	50	150	120	110	52
SYI-QAPE5050	50	50	165	135	125	52
SYI-QAPE5063	50	63	165	135	125	54
SYI-QAPE60/6563	60/65	63	185	145	135	54
SYI-QAPE60/6575	60/65	75	185	145	135	57
SYI-QAPE8075	80	75	200	165	155	57
SYI-QAPE8090	80	90	200	165	155	60
SYI-QAPE10090	100	90	220	190	180	60
SYI-QAPE100110	100	110	220	190	180	64
SYI-QAPE125125	125	125	250	218	210	72
SYI-QAPE125140	125	140	250	218	210	76
SYI-QAPE150160	150	160	285	248	240	80
SYI-QAPE200180	200	180	340	294	304	86
SYI-QAPE200200	200	200	340	294	304	90
SYI-QAPE200225	200	225	340	294	304	90
SYI-QAPE250250	250	250	400	360	350	92
SYI-QAPE300280	300	280	455	414	402	98

注：对于以上未提及的尺寸，请与我们联系。我们有权在不另行通知的情况下更改数据。

NOTE: For other sizes not mentioned above, please contact us. We have right to change the data without further notice.

紧凑型快速接头是我们新改进的一款快连，它的特点是经过胶圈挤压以达到对PVC/PE管的密封和防脱功能。

SYI-CQA is our newly improved Quick Adaptor, which is characterized by gasket extrusion to achieve the sealing and anti-slipping function of uPVC/PE pipe.

紧凑型快速接头质高价优，具有更大的市场竞争力。

SYI-CQA with the high quality and best price, has greater market competitiveness.



SYI-CQAPE



SYI-CQAPVC

优势 Advantages

为了达到这一功能就必须提高铸件的表面质量，我们通过工艺改进，形成了以生产线为主导的生产工艺，这样我们既提高了产品质量又提高了生产效率。

In order to achieve this function, improving surface quality of castings is the key. We now use automatic moulding line, so the production efficiency and product quality have been greatly improved.

山西原盛

可拆卸接头

Dismantling Joints

SYI-DJ

- 紧凑型：更轻便、更简便、更低成本

COMPACT TYPE: Lighter, Easier and Lower Cost!



- 由两个法兰件组装而成

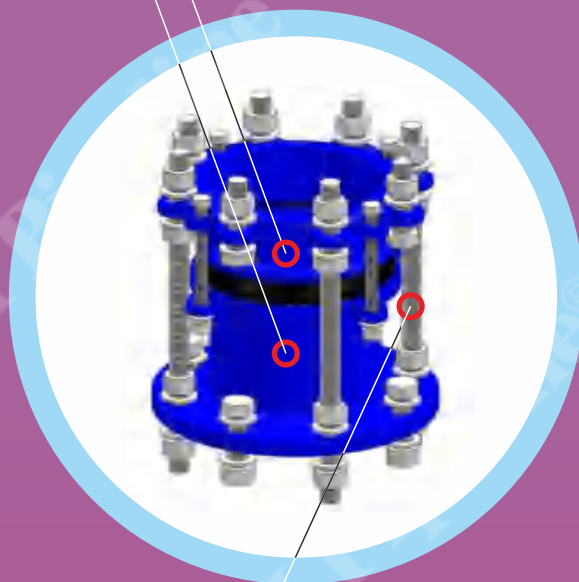
Assembled by a double flanged fitting

- 提供纵向调整(达50毫米)的法兰系统

Longitudinal adjustment (up to 50mm) in flanged systems

- 通过调节两个法兰产品之间的距离和旋转，为法兰产品的安装和移动提供了一种简单的方法

It provides a simple method of the installation and removal of flanges by adjusting the distance between 2 flanges and turning around.



- 安装也很简单，只需用一个力矩扳手将高强度的钢或不锈钢连接螺栓紧固即可

The installation is also simple and you can only use a torque wrench to tighten the high strength steel or stainless steel connection bolts

- 可以快速拆卸

It can be quickly disassembled

- 非常方便地维修阀门、泵或仪表

Very convenient for servicing valves, pumps or instrumentation

- 简化了未来管道维护和修改所需的时间

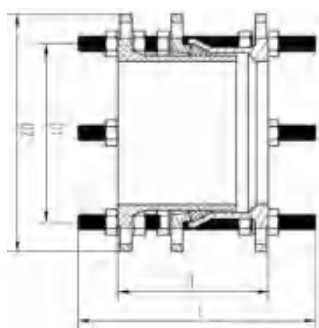
It simplifies the time required for maintenance and modification in future plumbing

- 减少了整个管道项目的停工时间

Reduces downtime for the entire pipeline

可拆卸接头 PN10

Dismantling Joints
SYI-DJ PN10



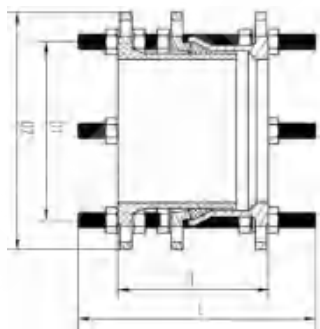
SYI S. N.	DN	D1	D2	H	L	MIN Length of Joint	MAX Length of Joint
	mm						
SYI-DJ80P0	80	160	200	200	310	175	225
SYI-DJ100P0	100	180	220	200	310	175	225
SYI-DJ125P0	125	210	250	200	310	175	225
SYI-DJ150P0	150	240	285	200	320	175	225
SYI-DJ200P0	200	295	340	220	340	195	245
SYI-DJ250P0	250	350	400	230	370	205	255
SYI-DJ300P0	300	400	455	250	410	225	275
SYI-DJ350P0	350	460	505	260	410	235	285
SYI-DJ400P0	400	515	565	270	430	245	295
SYI-DJ450P0	450	565	615	270	430	245	295
SYI-DJ500P0	500	620	670	280	440	255	305
SYI-DJ600P0	600	725	780	300	480	275	325
SYI-DJ700P0	700	840	895	300	480	275	325
SYI-DJ800P0	800	950	1015	320	520	295	345
SYI-DJ900P0	900	1050	1115	320	520	295	345
SYI-DJ1000P0	1000	1160	1230	340	560	315	365
SYI-DJ1100P0	1100	1270	1340	340	560	315	365
SYI-DJ1200P0	1200	1380	1455	360	600	335	385
SYI-DJ1400P0	1400	1590	1675	380	630	355	405
SYI-DJ1500P0	1500	1700	1785	400	665		
SYI-DJ1600P0	1600	1820	1915	400	665	375	425
SYI-DJ1800P0	1800	2020	2115	420	730	395	445
SYI-DJ2000P0	2000	2230	2325	440	730	415	465
SYI-DJ2200P0	2200	2440	2550	450	750	425	475
SYI-DJ2400P0	2400	2650	2760	460	770	435	485
SYI-DJ2600P0	2600	2850	2960	500	800	475	525

注：对于以上未提及的尺寸，请与我们联系。我们有权在不另行通知的情况下更改数据。

NOTE: For other sizes not mentioned above, please contact us. We have right to change the data without further notice.

可拆卸接头 PN16

Dismantling Joints
SYI-DJ PN16



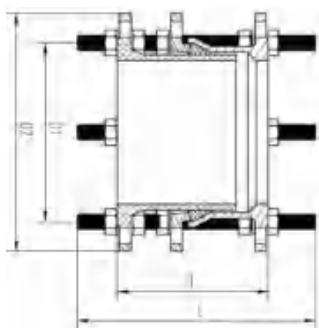
SYI S. N.	DN	D1	D2	H	L	MIN Length of Joint	MAX Length of Joint
	mm						
SYI-DJ80P1	80	160	200	200	310	175	225
SYI-DJ100P1	100	180	220	200	310	175	225
SYI-DJ125P1	125	210	250	200	310	175	225
SYI-DJ150P1	150	240	285	200	320	175	225
SYI-DJ200P1	200	295	340	220	340	195	245
SYI-DJ250P1	250	355	400	230	370	205	255
SYI-DJ300P1	300	410	455	250	410	225	275
SYI-DJ350P1	350	470	520	260	410	235	285
SYI-DJ400P1	400	525	580	270	430	245	295
SYI-DJ450P1	450	585	640	270	430	245	295
SYI-DJ500P1	500	650	715	280	440	255	305
SYI-DJ600P1	600	770	840	300	480	275	325
SYI-DJ700P1	700	840	910	300	480	275	325
SYI-DJ800P1	800	950	1025	320	520	295	345
SYI-DJ900P1	900	1050	1125	320	520	295	345
SYI-DJ1000P1	1000	1170	1255	340	560	315	365
SYI-DJ1100P1	1100	1270	1355	340	560	315	365
SYI-DJ1200P1	1200	1390	1485	360	600	335	385
SYI-DJ1400P1	1400	1590	1685	380	630	355	405
SYI-DJ1500P1	1500	1710	1820	400	665		
SYI-DJ1600P1	1600	1820	1930	400	665	375	425
SYI-DJ1800P1	1800	2020	2130	420	730	395	445
SYI-DJ2000P1	2000	2230	2345	440	730	415	465
SYI-DJ2200P1	2200	2440	2555	450	750	425	475
SYI-DJ2400P1	2400	2650	2765	460	770	435	485
SYI-DJ2600P1	2600	2850	2960	500	800	475	525

注：对于以上未提及的尺寸，请与我们联系。我们有权在不另行通知的情况下更改数据。

NOTE: For other sizes not mentioned above, please contact us. We have right to change the data without further notice.

可拆卸接头 PN25

Dismantling Joints
SYI-DJ PN25



SYI S. N.	DN	D1	D2	H	L	MIN Length of Joint	MAX Length of Joint
	mm						
SYI-DJ80P2	80	160	200	200	330	175	225
SYI-DJ100P2	100	190	235	200	340	175	225
SYI-DJ125P2	125	220	270	200	340	175	225
SYI-DJ150P2	150	250	300	200	370	175	225
SYI-DJ200P2	200	310	360	220	370	195	245
SYI-DJ250P2	250	370	425	230	410	205	255
SYI-DJ300P2	300	430	485	250	410	225	275
SYI-DJ350P2	350	490	555	260	440	235	285
SYI-DJ400P2	400	550	620	270	480	245	295
SYI-DJ450P2	450	600	670	270	480	245	295
SYI-DJ500P2	500	660	730	280	480	255	305
SYI-DJ600P2	600	770	845	300	520	275	325
SYI-DJ700P2	700	875	960	300	530	275	325
SYI-DJ800P2	800	990	1085	320	600	295	345
SYI-DJ900P2	900	1090	1185	320	600	295	345
SYI-DJ1000P2	1000	1210	1320	340	650	315	365
SYI-DJ1100P2	1100						
SYI-DJ1200P2	1200	1420	1530	360	720	335	385
SYI-DJ1400P2	1400	1640	1755	380	770	355	405
SYI-DJ1500P2	1500	1750	1865	400	665		
SYI-DJ1600P2	1600	1860	1975	400	815	375	425

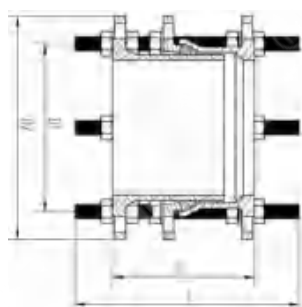
注：对于以上未提及的尺寸，请与我们联系。我们有权在不另行通知的情况下更改数据。

NOTE: For other sizes not mentioned above, please contact us. We have right to change the data without further notice.

可拆卸接头 PN40

Dismantling Joints

SYI-DJ PN40



SYI S. N.	DN	D1	D2	H	L	MIN Length of Joint	MAX Length of Joint
	mm						
SYI-DJ80P4	80	160	200	210	330	175	225
SYI-DJ100P4	100	190	235	220	340	175	225
SYI-DJ125P4	125	220	270	220	370	175	225
SYI-DJ150P4	150	250	300	230	370	175	225
SYI-DJ200P4	200	320	375	230	410	195	245
SYI-DJ250P4	250	385	450	250	440	205	255
SYI-DJ300P4	300	450	515	250	440	225	275
SYI-DJ350P4	350	510	580	270	480	235	285
SYI-DJ400P4	400	585	660	280	520	245	295
SYI-DJ450P4	450	610	685	280	520	245	295
SYI-DJ500P4	500	670	755	300	560	255	305
SYI-DJ600P4	600	795	890	300	600	275	325

注：对于以上未提及的尺寸，请与我们联系。我们有权在不另行通知的情况下更改数据。

NOTE: For other sizes not mentioned above, please contact us. We have right to change the data without further notice.

常规款



紧凑款



马鞍管卡

Saddle Clamps

SYI-SC

- 工作压力: 16 bar 或 250 psi
Working Pressure: 16 bar or 250 psi



马鞍管卡，用于在现有或新建的输水或燃气管道上进行永久性(热)攻丝。

定位在管卡内的胶垫可实现完美的密封。

SYI-SC的简单性和通用性使其安装非常容易，可以在整个管道的压力下安装，消除了关闭整个管道供应的成本，且没有管道中断，给客户带来极大的方便。

SYI Saddle Clamps are used to make permanent (hot) tapping on existing or new pipelines of water and gas.

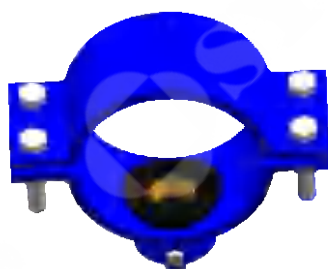
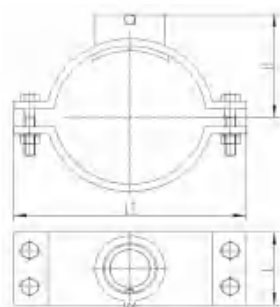
Perfect seal through gaskets, which are enclosed in the chamber of the alignment saddle.

The simplicity and versatility of SYI-SC can make it very easy installed and can be installed under pressure of the whole pipeline. It eliminates the cost of shutting down the entire pipeline supply and brings great convenience to customers.

紧凑型PVC管专用马鞍管卡

Compact Saddle Clamps for uPVC pipes

SYI-CSCPVC



SYI S. N.	OD	Tapping	L	L1	H	Bolts No.
	mm	inch				
SYI-CSCPVC50*20	50	20	55	120	54	4
SYI-CSCPVC50*40		40				
SYI-CSCPVC63*20	63	20	55	133	60	4
SYI-CSCPVC63*40		40				
SYI-CSCPVC75*20	75	20	55	145	66	4
SYI-CSCPVC75*40		40				
SYI-CSCPVC90*20	90	20	60	160	75	4
SYI-CSCPVC90*40		40				
SYI-CSCPVC110*20	110	20	60	180	85	4
SYI-CSCPVC110*40		40				
SYI-CSCPVC125*20	125	20	60	195	92	4
SYI-CSCPVC125*40		40				
SYI-CSCPVC140*20	140	20	60	210	100	4
SYI-CSCPVC140*40		40				
SYI-CSCPVC160*20	160	20	65	260	110	4
SYI-CSCPVC160*40		40				
SYI-CSCPVC200*20	200	20	65	300	131	4
SYI-CSCPVC200*40		40				

1. 结构简化。
Simplified structure.
2. 既降低生产成本又提高产品质量。
Reduced production cost and improved product quality.
3. 一款特别有竞争力的新型PVC管卡。
It is a particularly competitive new saddle clamps for uPVC pipes.

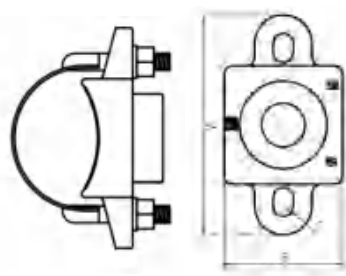
注：对于以上未提及的尺寸，请与我们联系。我们有权在不另行通知的情况下更改数据。

NOTE: For other sizes not mentioned above, please contact us. We have right to change the data without further notice.

广范围钢带管卡

Universal Tapping Saddles

SYI-SCUT



SYI S. N.	DN	Tapping	Pipe O.D. range	A	B	Bolt No.
	mm	inch	mm			
SYI-SCUT74-88	60	1/2"	74-88	130	70	2
SYI-SCUT74-88	60	3/4"	74-88	130	70	2
SYI-SCUT74-88	60	1"	74-88	130	70	2
SYI-SCUT74-88	60	1 1/4"	74-88	130	70	2
SYI-SCUT74-88	60	1 1/2"	74-88	130	70	2
SYI-SCUT74-88	60	2"	74-88	130	70	2
SYI-SCUT84-106	80	1/2"	84-106	160	80	2
SYI-SCUT84-106	80	3/4"	84-106	160	80	2
SYI-SCUT84-106	80	1"	84-106	160	80	2
SYI-SCUT84-106	80	1 1/4"	84-106	160	80	2
SYI-SCUT84-106	80	1 1/2"	84-106	160	80	2
SYI-SCUT84-106	80	2"	84-106	160	80	2
SYI-SCUT84-120	100	1/2"	84-120	160	80	2
SYI-SCUT84-120	100	3/4"	84-120	160	80	2
SYI-SCUT84-120	100	1"	84-120	160	80	2
SYI-SCUT84-120	100	1 1/4"	84-120	160	80	2
SYI-SCUT84-120	100	1 1/2"	84-120	160	80	2
SYI-SCUT84-120	100	2"	84-120	160	80	2

广范围钢带管卡，不锈钢带可根据管外径进行调节，适用于铸铁、球墨铸铁、uPVC、钢材、石棉水泥等各种直径及材质。

SYI-SCUT, the Stainless Steel Band can be adjusted according to different OD of the pipes that is applicable for various of diameters and materials, such as cast iron, ductile iron, uPVC, steel and asbestos cement.

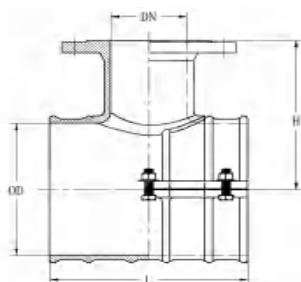
注：对于以上未提及的尺寸，请与我们联系。我们有权在不另行通知的情况下更改数据。

NOTE: For other sizes not mentioned above, please contact us. We have right to change the data without further notice.

PVC管用法兰支口管卡

Saddle Clamps with Flanged Outlet for uPVC pipes

SYI-SCFO PN10/16



SYI S. N.	OD (pipe)	DN (flange)	L	H	Bolt	
	mm				no.	size
SYI-SCFO9080	90	80	180	145	6	M12*45
SYI-SCFO11080	110	80	200	170	6	M12*45
SYI-SCFO110100	110	100	200	180	6	M12*45
SYI-SCFO16080	160	80	250	200	6	M12*50
SYI-SCFO160100	160	100	250	205	6	M12*50
SYI-SCFO160125	160	125	250	215	6	M12*50
SYI-SCFO20080	200	80	250	225	6	M12*50
SYI-SCFO200100	200	100	250	230	6	M12*50
SYI-SCFO200125	200	125	250	235	6	M12*50
SYI-SCFO25080	250	80	300	250	8	M12*50
SYI-SCFO250100	250	100	300	255	8	M12*50
SYI-SCFO250125	250	125	300	260	8	M12*50
SYI-SCFO250150	250	150	300	265	8	M12*50
SYI-SCFO31580	315	80	300	295	8	M12*55
SYI-SCFO315100	315	100	300	300	8	M12*55
SYI-SCFO315125	315	125	300	305	8	M12*55
SYI-SCFO315150	315	150	300	310	8	M12*55
SYI-SCFO315200	315	200	300	320	8	M12*55
SYI-SCFO315250	315	250	400	330	8	M12*55
SYI-SCFO315300	315	300	500	340	10	M12*55
SYI-SCFO40080	400	80	300	340	8	M12*60
SYI-SCFO400100	400	100	400	355	8	M12*60

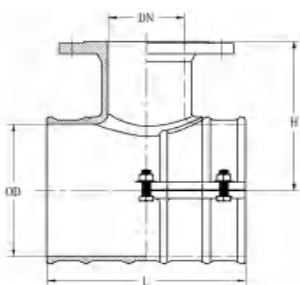
注：对于以上未提及的尺寸，请与我们联系。我们有权在不另行通知的情况下更改数据。

NOTE: For other sizes not mentioned above, please contact us. We have right to change the data without further notice.

PVC管用法兰支口管卡

Saddle Clamps with Flanged Outlet for uPVC pipes

SYI-SCFO PN10/16



SYI S. N.	OD (pipe)	DN (flange)	L	H	Bolt	
	mm				no.	size
SYI-SCFO400125	400	125	300	355	8	M12*60
SYI-SCFO400150	400	150	400	360	8	M12*60
SYI-SCFO400200	400	200	300	380	8	M12*60
SYI-SCFO400250	400	250	400	390	8	M12*60
SYI-SCFO400300	400	300	500	400	10	M12*60
SYI-SCFO400400	400	400	500	420	10	M12*60
SYI-SCFO50080	500	80	300	400	8	M12*65
SYI-SCFO500100	500	100	300	405	8	M12*65
SYI-SCFO500125	500	125	300	425	8	M12*65
SYI-SCFO500150	500	150	300	410	8	M12*65
SYI-SCFO500200	500	200	300	410	8	M12*65
SYI-SCFO500250	500	250	400	450	8	M12*65
SYI-SCFO500500	500	500	600	500	10	M12*65

PVC管用法兰支口管卡，用于现有或新的PVC或PE管道上开法兰支口。

SYI-SCFO, are used to make flanged tapping outlet on existing or new uPVC or PE pipelines.

注：对于以上未提及的尺寸，请与我们联系。我们有权在不另行通知的情况下更改数据。

NOTE: For other sizes not mentioned above, please contact us. We have right to change the data without further notice.

紧凑型 COMPACT

- √ 更轻 Lighter
- √ 更方便 Easier
- √ 更便宜 Lower Cost

山西原盛紧凑型系列
Compact System designed by SYI

舍得

舍得笨重、昂贵、不好用；
得到轻巧、价廉、物更美。



原盛集团 SYI GROUP

集团总部：山西省太原市滨河西路51号摩天石
Group Headquarters: Motianshi, No. 51, Binhe West Road,
Taiyuan, Shanxi, China 030027

内销 Domestic
Tel: 0351-4138279
Fax: 0351-4040962
Email: syi@syifoundry.com
www.shanxiyuansheng.com

外销 Export
Tel: 86-351-2027764
Fax: 86-351-4040962
Email: info@syigroup.com
www.syigroup.com
www.syipipeline.com
www.syifoundry.com
www.sycastings.com
www.syiforgings.com



“管道连接器”电子版样本
QR Code of "Couplings & Flanged adaptors"



内销总监
Domestic Sales



外销总监
Export Sales