

TABLA Modular Panel Wallform System (TB2) - Light Duty



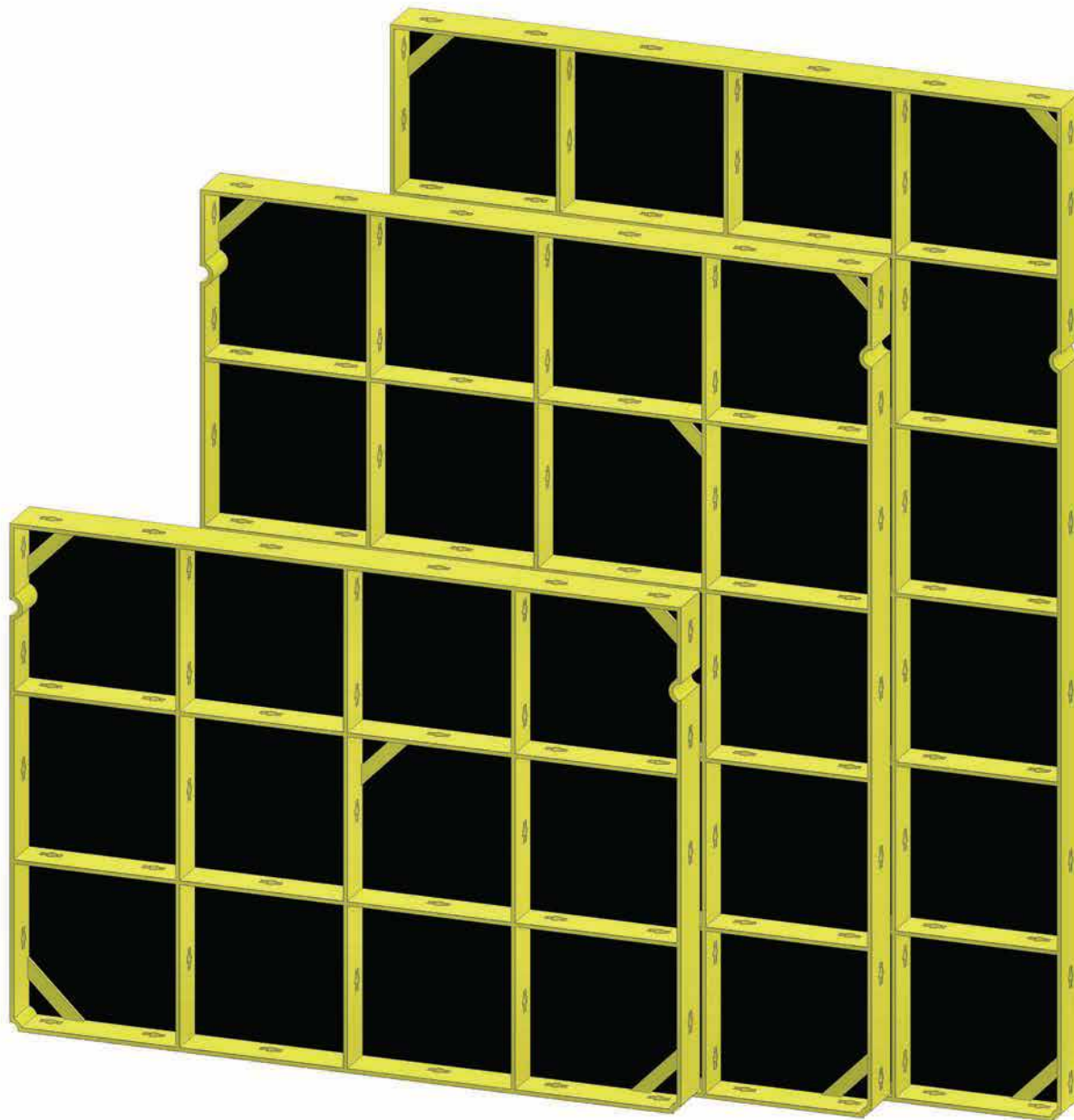
TABLA Modular Panel Wallform System (TB2) - Light Duty



TB2 - TABLA Modular Panel Wallform System

The most important aspect of successful structural construction is the formwork system. The Tb2 System will always offer the most trustful, secure, efficient and cutting edge of formwork technology for various structures. The Tb2 System is an ingenious small-panel formwork system that was specially designed for cost-effective forming of concrete elements.

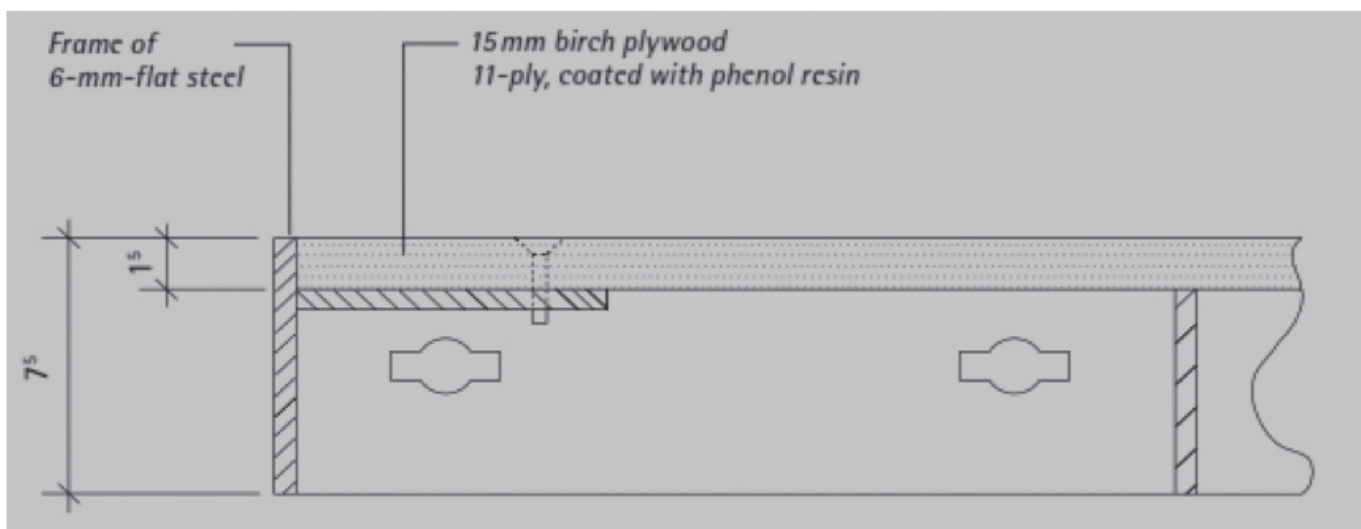
Tb2 system is a complete, crane-independent formwork system enabling you to shutter all structures to perfection in an inexpensive and cost-effective manner. All of the panels belonging to this system are relatively light and handy that they can be handled and fitted by a maximum of two people.



System Features



TB2 Core Wall



This is another panel system in our wall formwork fleet where the worker needs only a hammer to connect the panels which makes this system very efficient and fastest to erect due to lightweight panels.

System Features



Tb2 system panels are made from steel frames which make the panels more rigid, more robust and lighter than competitor panels. The Tb2 system enables large savings in timber elements on site.

Can be used without requiring a crane, which dramatically reduces construction costs.

The quality of the 15mm plywood sheet overlay on the face provides long life and a high quality finish for the concrete.

The Tb2 system has a wide range of panel sizes, allowing virtually any configuration to be erected. The erection and striking of an Tb2 system is fast and straight forward and only needs a team of two, saving time and money.

Panels are attached together using key Bolts which improves preparation times.

The Tb2 system comprehensive range of accessories enables it to be used in an extensive range of construction projects.

Tb2 system panels can be used with steel soldiers or steel walers to create large crane handled formwork shutters.

Tb2 System Panels:

The Tb2 system panels are lightweight and therefore can be erected very quickly by hand. The Tb2 system lets you construct extremely quickly and economically, even when no crane is available. On sites with a crane, it is also possible to lift several panels at a time, in gang-form.

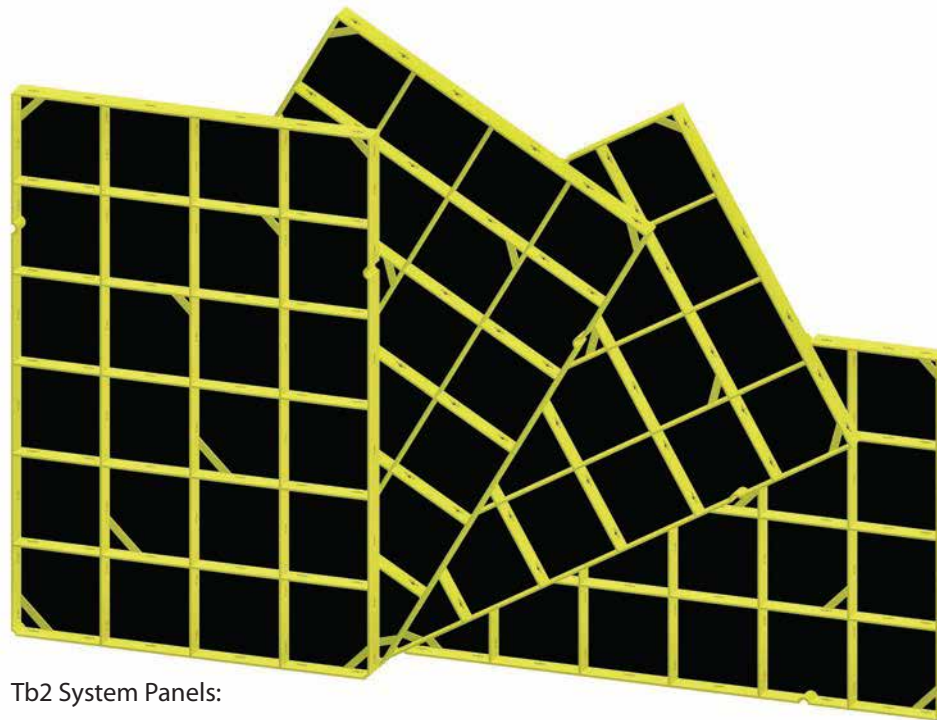
The ingenious panel size grid makes for optimum adaptability to all construction site situations. The Tb2 system is perfectly tailored for use in the fields of residential construction and civil engineering.

Tb2 Panel Sizes:

Width 10,15,20,25,30,35,40,45,50,55,60,65,75,100cm

Height 75,125,150cm

System Features



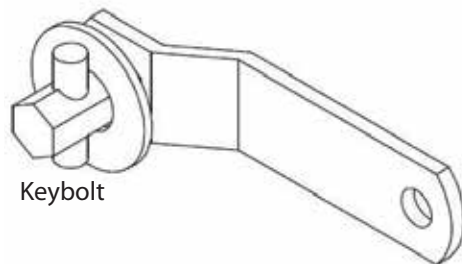
Tb2 System Panels:

Very flexible to assemble in required height. The TB2 system is designed to be used in equal ease and secured in both ways horizontally or vertically and with panels of different sizes.

Modular Panel Connections

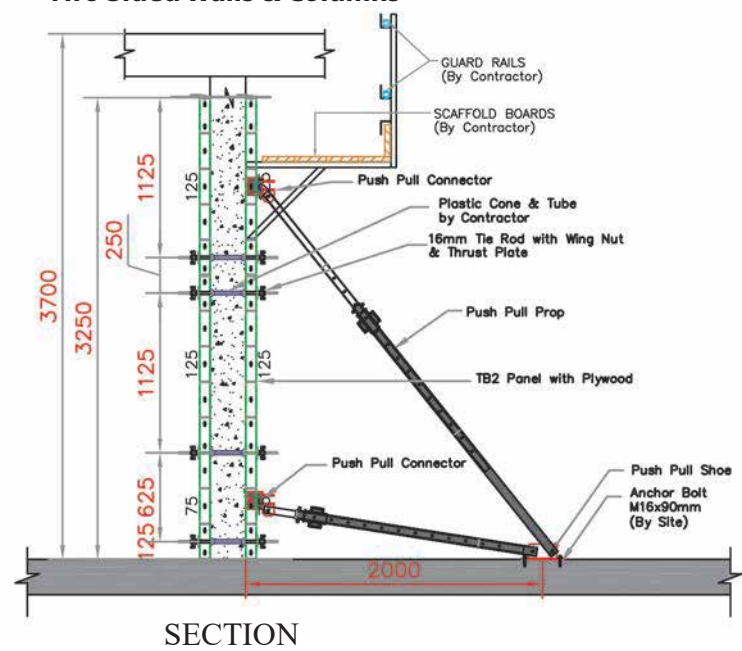
Keybolt

- ◆ The easy and simple connection between panels is only require a hammer to fixing and loosening.
- ◆ It is beneficial in fast and easy operations and convenient dismantlement also ensuring the panel's strength, rigidity and flatness; it can also contribute to moulding a higher quality concrete face.
- ◆ The Keybolt fixed in any direction vertically or horizontally to the framework quickly and securely.



Keybolt

Two Sided Walls & Columns

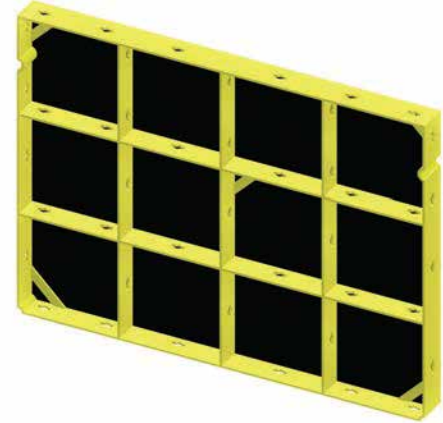


SECTION

TB-2 Modular Wall Panels

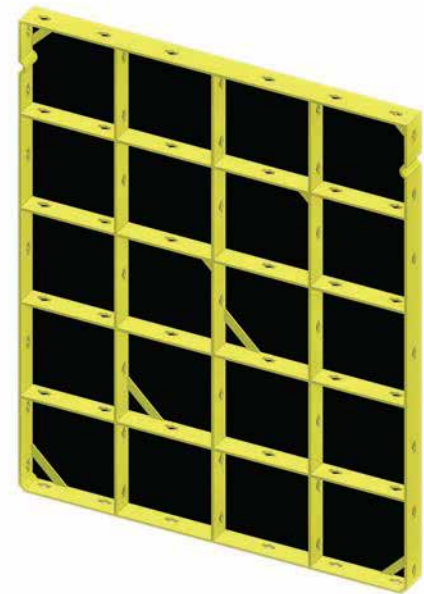
750 Series Wall Panels

Item Code	mm	ft	m ²	ft ²	kg	lbs
T2P75100	750 x 100	5.53 '2" X 3.94 '0"	0.075	0.807	6.25	13.78
T2P75150	750 x 150	5.53 '2" X 5.91 '0"	0.113	1.211	6.85	15.10
T2P75200	750 x 200	5.53 '2" X 7.88 '0"	0.150	1.615	7.70	16.98
T2P75250	750 x 250	5.53 '2" X 9.84 '0"	0.188	2.018	8.35	18.41
T2P75300	750 x 300	5.53 '2" X 11.81 '0"	0.225	2.422	8.90	19.62
T2P75350	750 x 350	5.53 '2" X 1.78 '1"	0.263	2.826	9.40	20.73
T2P75400	750 x 400	5.53 '2" X 3.75 '1"	0.300	3.229	10.20	22.49
T2P75450	750 x 450	5.53 '2" X 5.72 '1"	0.338	3.633	10.70	23.59
T2P75500	750 x 500	5.53 '2" X 7.69 '1"	0.375	4.037	13.35	29.44
T2P75550	750 x 550	5.53 '2" X 9.66 '1"	0.413	4.440	13.95	30.76
T2P75600	750 x 600	5.53 '2" X 11.63 '1"	0.450	4.844	14.60	32.19
T2P75650	750 x 650	5.53 '2" X 1.59 '2"	0.488	5.247	15.20	33.52
T2P75750	750 x 750	5.53 '2" X 5.53 '2"	0.563	6.055	18.40	40.57
T2P751000	750 x 1000	5.53 '2" X 3.38 '3"	0.750	8.073	23.60	52.04



1250 Series Wall Panels

Item Code	mm	ft	m ²	ft ²	kg	lbs
T2P125100	1250 x 100	1.22 '4" X 3.94 '0"	0.125	1.346	10.30	22.71
T2P125150	1250 x 150	1.22 '4" X 5.91 '0"	0.188	2.018	11.05	24.37
T2P125200	1250 x 200	1.22 '4" X 7.88 '0"	0.250	2.691	12.35	27.23
T2P125250	1250 x 250	1.22 '4" X 9.84 '0"	0.313	3.364	13.25	29.22
T2P125300	1250 x 300	1.22 '4" X 11.81 '0"	0.375	4.037	14.00	30.87
T2P125350	1250 x 350	1.22 '4" X 1.78 '1"	0.438	4.709	14.95	32.96
T2P125400	1250 x 400	1.22 '4" X 3.75 '1"	0.500	5.382	15.90	35.06
T2P125450	1250 x 450	1.22 '4" X 5.72 '1"	0.563	6.055	16.65	36.71
T2P125500	1250 x 500	1.22 '4" X 7.69 '1"	0.625	6.728	20.95	46.19
T2P125550	1250 x 550	1.22 '4" X 9.66 '1"	0.688	7.400	21.90	48.29
T2P125600	1250 x 600	1.22 '4" X 11.63 '1"	0.750	8.073	22.75	50.16
T2P125650	1250 x 650	1.22 '4" X 1.59 '2"	0.813	8.746	23.60	52.04
T2P125750	1250 x 750	1.22 '4" X 5.53 '2"	0.938	10.091	28.95	63.83
T2P1251000	1250 x 1000	1.22 '4" X 3.38 '3"	1.250	13.455	36.75	81.03



1500 Series Wall Panels

Item Code	mm	ft	m ²	ft ²	kg	lbs
T2P150100	1500 x 100	11.06 '4" X 3.94 '0"	0.150	1.615	12.20	26.90
T2P150150	1500 x 150	11.06 '4" X 5.91 '0"	0.225	2.422	13.15	29.00
T2P150200	1500 x 200	11.06 '4" X 7.88 '0"	0.300	3.229	14.50	31.97
T2P150250	1500 x 250	11.06 '4" X 9.84 '0"	0.375	4.037	15.95	35.17
T2P150300	1500 x 300	11.06 '4" X 11.81 '0"	0.450	4.844	16.55	36.49
T2P150350	1500 x 350	11.06 '4" X 1.78 '1"	0.525	5.651	17.45	38.48
T2P150400	1500 x 400	11.06 '4" X 3.75 '1"	0.600	6.458	18.70	41.23
T2P150450	1500 x 450	11.06 '4" X 5.72 '1"	0.675	7.266	19.60	43.22
T2P150500	1500 x 500	11.06 '4" X 7.69 '1"	0.750	8.073	24.55	54.13
T2P150550	1500 x 550	11.06 '4" X 9.66 '1"	0.825	8.880	25.65	56.56
T2P150600	1500 x 600	11.06 '4" X 11.63 '1"	0.900	9.688	26.65	58.76
T2P150650	1500 x 650	11.06 '4" X 1.59 '2"	0.975	10.495	27.80	61.30
T2P150750	1500 x 750	11.06 '4" X 5.53 '2"	1.125	12.110	33.85	74.64
T2P1501000	1500 x 1000	11.06 '4" X 3.38 '3"	1.500	16.146	43.45	95.81



Inside Corner

Item Code	Size	kg	lbs
T2IC	750x150x150 mm	9.60	21.17
T2IC	1250x150x150 mm	14.85	32.74
T2IC	1500x150x150 mm	19.40	42.78

Outside Corner

Item Code	Size	kg	lbs
T2OC	750x60x60 mm	3.60	7.94
T2OC	1250x60x60 mm	6.00	13.23
T2OC	1500x60x60 mm	7.90	17.42

Filler Plate

Item Code	Size	kg	lbs
T2FP	750x80x80 mm	4.10	9.04
T2FP	1250x80x80 mm	6.70	14.77
T2FP	1500x80x80 mm	7.50	16.54

Polygonal Filler Post Out Side & Inside

Item Code	Size	kg	lbs
T2PFPO759 T2PFPI759	750x90 mm 750X45mm	9.60	21.17
T2PFPO1259 T2PFPI1259	1250x90 mm 1250X45mm	14.85	32.74
T2PFPO1509 T2PFPI1509	1500x90 mm 1500X45mm	19.40	42.78



Inside Corner



Outside Corner



Filler Plate



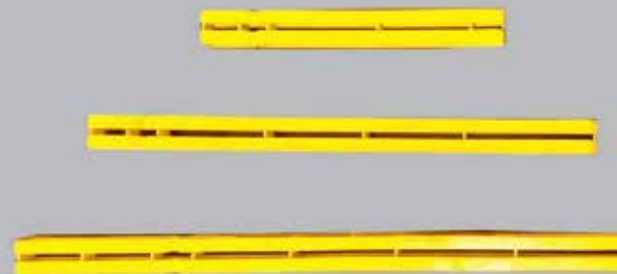
Polygonal Filler Post Out Side & Inside

BUILD STRONG BUILD WITH QUALITY

Components

Panel (Filler Post)

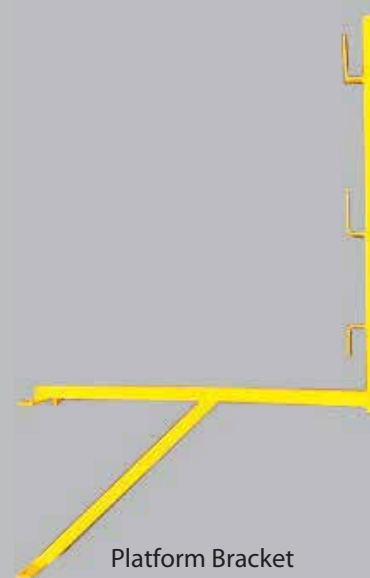
Item Code	Size	kg	lbs
T2PFP	750x50 mm	5.55	12.24
T2PFP	1250x50 mm	8.25	18.19
T2PFP	1500x50 mm	10.10	22.27



Panel (Filler Post)

Platform Bracket

Item Code	Item Name	kg	lbs
T2PFB	PLATFORM BRACKET	10.40	22.93



Platform Bracket

Hinged Corner Post

Item Code	Size	kg	lbs
T2HCP	750x95x95 mm	10.80	23.81
T2HCP	1250x95x95 mm	16.00	35.28
T2HCP	1500x95x95 mm	20.40	44.98



Hinged Corner Post

Components

BUILD STRONG BUILD WITH QUALITY

Item Code	Item Name	kg	lbs
T2KB	Key Bolt	0.20	0.44
T2LH	Lifting Hook	3.90	8.60
T2AT	Assembly Tools	3.55	7.83
T2SS	Spacer Strip 1330x60 mm	3.60	7.94



Key Bolt



Lifting Hook



Assembly Tools

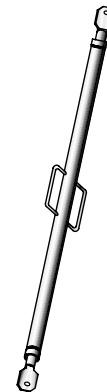


Spacer Strip

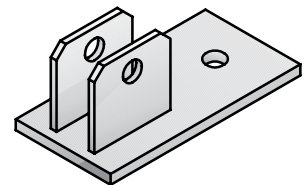
Item Code	Item Name	kg	lbs
B107003	Push Pull Prop	22.40	49.4
EMS	Kicker / Prop	1.96	4.3
B107005	Tb2- Brace Conn	0.95	2.1
WTR161000	Tie Rod	1.32/m	0.9/ft
WGNT	Wing Nut	0.360	0.8
WGPE	Wing Plate	0.610	1.3
AF35	A-Frame	205	452



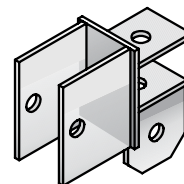
Push Pull Prop



Kicker Brace



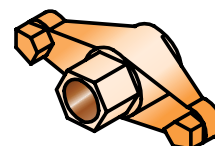
Kicker/prop Connector(Shoe)



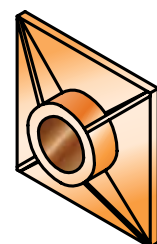
Brace Connector



Tie Rod



Wing Nut-16 Mm H/D



Cast Steel Counterplate