

Gang Wallform System



Gang Wallform System



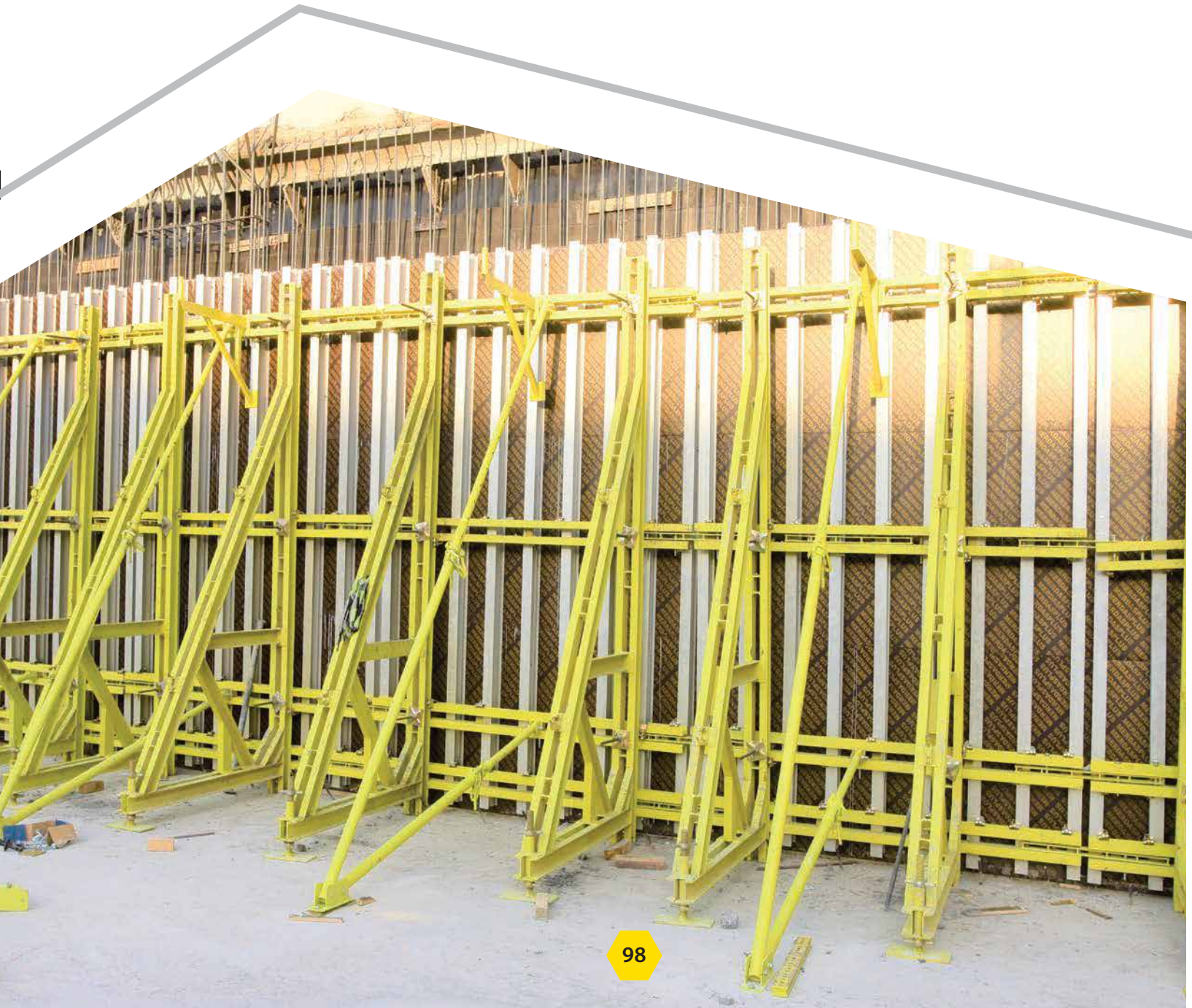
The Gang Wall Formwork System

The Gang Wall Formwork System was developed with a combination of Double Steel Walers, Aluminium Beams or Timber Beams. This system is widely recognized as one of the most adaptable formwork systems available to contractors easy to erect, align and dismantling. The Gang Waling Formwork system adapts to all heights and widths accommodates every pressure and meets all construction demands.

The basis of the Waling System is the Aluminium beam. The waling system formwork elements are assembled quickly and easily by connecting the aluminium beams to the steel walers by means of T-bolt clamps. Dismantling of elements is done as simply as the erection of the system. The advantage is that the Gang waling formwork system provides a high adaption and easy reassembling when ground plans of the structure change frequently.

Retaining Wall Form

The Retaining Wall Form System consists of a aluminium beam, plywood, A-frame, double push-pull prop, double channel waler, soldier beam, walkway bracket & tie rod with its fasteners.



The Core Wall Form System consists of a aluminium beam, plywood, double push-pull prop, double channel waler, soldier beam, walkway bracket & tie rod with its fasteners.

Gang formwork system is an extremely flexible and cost effective wall formwork system suitable for walls and columns. It uses all standard components, is easy to assemble, with tight panel joints, internal or external corners and gives an excellent concrete finish. It can be used for virtually any shape or practical height.

BENEFITS

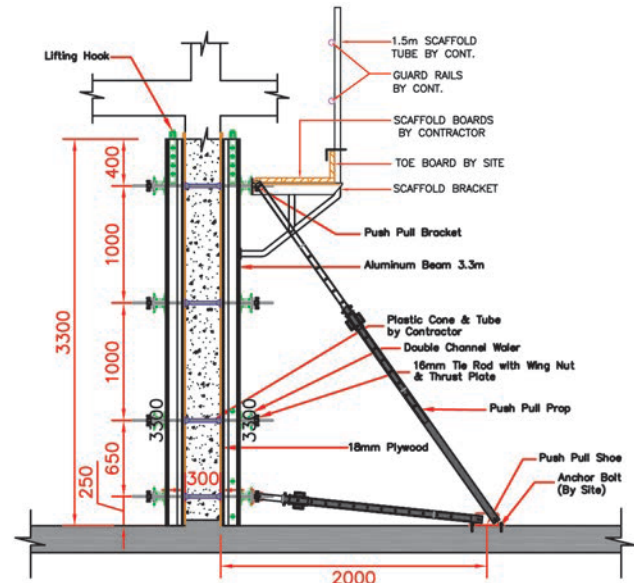
- For the efficient and economical creation of concrete with a high quality of finish.
- Optimized formwork with regard to defined concrete pressure.
- Common standard accessories.
- Easy jointing of walers and aluminum beams.
- Simple and tight panel joints with connectors.
- Lower transport volume when moving the items in dismantled state.
- Simple and tight panel joints with connectors.
- Easily replaceable plywood in case of damage.



Column Wallform

The Column Wall Form System consists of a aluminium beam, plywood, double push-pull prop, double channel waler, soldier beam, walkway bracket & tie rod with its fasteners.

Two Sided Walls and Columns



SECTION



Components

Item Description	Size		Weight	
	mm	ft	Kg	lbs
Aluminum Beam	3300	10' 9.92"	10.56	23.28

Item Description	Weight	
	Kg	lbs
Push Pull Prop set	32	70.56
Kicker/ Prop connector (Shoe)		
Brace conn.-2/ Set (Panel conn.)		

Item Description	Size		Weight	
	mm	ft	Kg	lbs
Double channel Waler	600 X 100	1' 11.62" X 0' 3.94"	11.32	24.96
	900 X 100	2' 11.43" X 0' 3.94"	16.76	36.96
	1200 X 100	3' 11.24" X 0' 3.94"	22.63	49.90
	1500 X 100	4' 11.06" X 0' 3.94"	28.29	62.38
	1800 X 100	5' 10.87" X 0' 3.94"	33.95	74.86
	2400 X 100	7' 10.49" X 0' 3.94"	45.26	99.80
Double Corner Waler	500 X 500	1' 7.69" X 1' 7.69"	12.74	28.09

Item Description	Weight	
	Kg	lbs
Corner Connecting Plate	9.82	21.65

Item Description	Weight	
	Kg	lbs
Angle Tie Bracket	2.64	5.82



Aluminum Beam



Push Pull Prop set



Kicker/ Prop connector (Shoe)



Double Channel Waler



Double Corner Waler



Corner Connecting Plate



Angle Tie Bracket

Components

Item Description	Weight	
	Kg	lbs
Internal Angle plate	8.22	18.13

Item Description	Weight	
	Kg	lbs
Adjustable waler extension 80cm.	4.98	10.98

Item Description	Weight	
	Kg	lbs
Connecting Pin	0.4	0.88

Item Description
Universal clamp

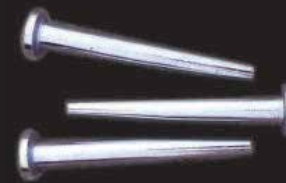
Item Description	Weight	
	Kg	lbs
Scaffold Bracket (Gang wall)	10.3	22.71
Lifting hook for Aluminium beam	4.08	9.00
Timber	***	***
Plywood (18mm)	***	***



Internal Angle plate



Adjustable waler extension 80cm.



Connecting Pin



Universal clamp



Scaffold Bracket (Gang wall)



Lifting hook



Timber



Plywood (18mm)

Components