



Your Building Partner



# STEEL CATALOGUE

# STEEL FORCE

Your Building Partner

[www.steelforceco.com](http://www.steelforceco.com)



## Table of Contents

1. Mild Steel
2. Stainless Steel
3. Galvanized Steel



# MILD STEEL

<b>-Tubes</b>	<b>-1</b>
<b>-Pipes</b>	<b>-2</b>
<b>-Bars</b>	<b>-3</b>
<b>-Steel Angles</b>	<b>-4</b>
<b>-Sheets</b>	<b>-5</b>
<b>-Beams</b>	<b>-6</b>
<b>-Gratings</b>	<b>-10</b>

# TUBES

## SQUARE TUBE

SIZE (MM)	LENGTH (METER)	THICKNESS (MM)
12X12	6	1.2
16X16	6	1.2 - 1.5
20X20	6	1.2 - 3.0
25X25	6	1.2 - 3.0
30X30	6	1.2 - 3.0
40X40	6	1.2 - 5.0
50X50	6	1.2 - 5.0
60X60	6	1.2 - 5.0
70X70	6	1.2 - 5.0
80X80	6	1.2 - 5.0
100X100	6	1.2 - 5.0
120X120	6	2.0 - 5.0
150X150	6	4.0 - 8.0

## RECTANGULAR TUBE

SIZE (MM)	LENGTH (METER)	THICKNESS (MM)
25X10	6	1.2
30X15	6	1.2 - 2.0
40X10	6	1.2 - 3.0
40X20	6	1.5 - 3.0
50X25	6	1.5 - 3.0
60X30	6	1.2 - 3.0
80X40	6	1.2 - 5.0
100X50	6	1.2 - 5.0
100X200	6	2.0 - 5.0
120X60	6	2.0 - 5.0
150X100	6	3.0 - 8.0



# PIPES

## HOLLOW SECTION CIRCULAR

SIZE (INCH)	LENGTH (METER)	THICKNESS (MM)
0.5"	6	1.2 - 1.5
0.75"	6	1.2 - 2.0
1"	6	1.25 - 3.0
1.25"	6	1.2 - 3.0
1.5"	6	1.2 - 3.0
2"	6	1.25 - 4.0
2.5"	6	1.2 - 3.0
3"	6	1.2 - 4.0
4"	6	1.2 - 4.0
5"	6	2.0 - 4.0
6"	6	2.0 - 4.8
8"	6	5.0

## HOLLOW SECTION CIRCULAR-SH40

SIZE (INCH)	LENGTH (METER)	THICKNESS (MM)
.50"	6	1.2 - 1.5
.75"	6	1.2 - 2.0
1"	6	1.25 - 3.0
1.25"	6	1.2 - 3.0
1.5"	6	1.2 - 3.0
2"	6	1.25 - 4.0
2.5"	6	1.2 - 3.0
3"	6	1.2 - 4.0
4"	6	1.2 - 4.0
6"	6	2.0 - 4.0



# BARS

## SQUARE BARS

SIZE (MM)	LENGTH (METER)
8X8	6
10X10	6
12X12	6
12X12	6
14X14	6
16X16	6
20X20	6
25X25	6
30X30	6

## ROUND BARS

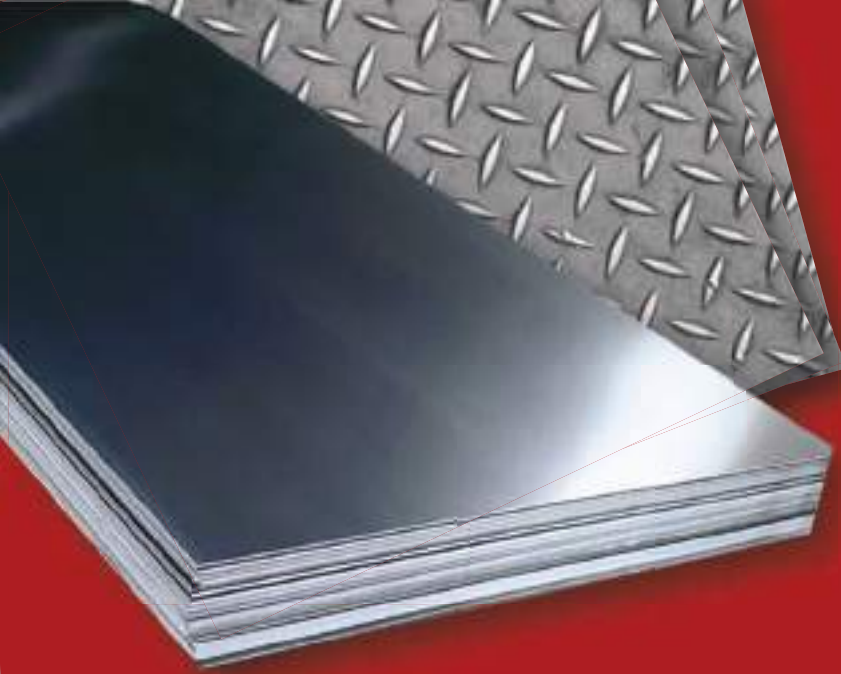
SIZE (MM)	LENGTH (METER)
6	6
8	6
10	6
12	6
14	6
16	6
18	6
20	6
25	6
30	6
35	6
40	6
50	6
60	6



# STEEL ANGLES

SIZE (MM)	LENGTH (METER)	THICKNESS (MM)
25X25	6	2.5
30X30	6	2.5 - 4.0
40X40	6	3.0 - 6.0
50X50	6	3.0 - 8.0
60X60	6	5.0 - 8.0
65X65	6	5.0 - 8.0
70X70	6	5.0 - 9.0
75X75	6	6.0 - 12.0
80X80	6	6.0 - 10.0
90X90	6	6.0
100X100	6	6.0 - 10.0
120X120	6	8.0 - 10.0
150X150	6	10.0 - 15.0





# SHEET

## PERFORATED SHEET

SIZE (MM)	LENGTH (MM)
6.0	1220X2440 1MM
8.0	1220X2440 1MM
10.0	1220X2440 1MM

## CHEQUERED PLATE

SIZE (MM)	LENGTH (MM)
1.6	1220X2440
1.8	1220X2440
2.0	1000X2000
2.3	1220X2440
2.5	1000X2000
2.7	1000X2000
3.0	1000X2000
4.0	1220X2440
5.0	1220X2440
6.0	1000X2000
6.0	1500X6000
8.0	1220X2440
10.0	1220X2440
12.0	1220X2440

## (HR) BLACK SHEET

SIZE (MM)	LENGTH (MM)
1.0	1220 x 2440
1.2	1220 x 2440
1.5	1220 x 2440
2.0	1220 x 2440
3.0	1220 x 2440
4.0	1220 x 2440 - 2000 x 6000
5.0	1220 x 2440 - 2000 x 6000
6.0	1220 x 2440 - 2000 x 6000
8.0	1220 x 2440 - 2000 x 6000
10.0	1220 x 2440 - 2000 x 6000
12.0	1220 x 2440 - 2000 x 6000
14.0	1220 x 2440 - 2000 x 6000
16.0	1220 x 2440 - 2000 x 6000
18.0	1220 x 2440 - 2000 x 6000
20.0	1220 x 2440 - 2000 x 6000
25.0	1220 x 2440 - 2000 x 6000
30.0	1220 x 2440 - 2000 x 6000
40.0	1220 x 2440 - 2000 x 6000
50.0	1220 x 2440 - 2000 x 6000





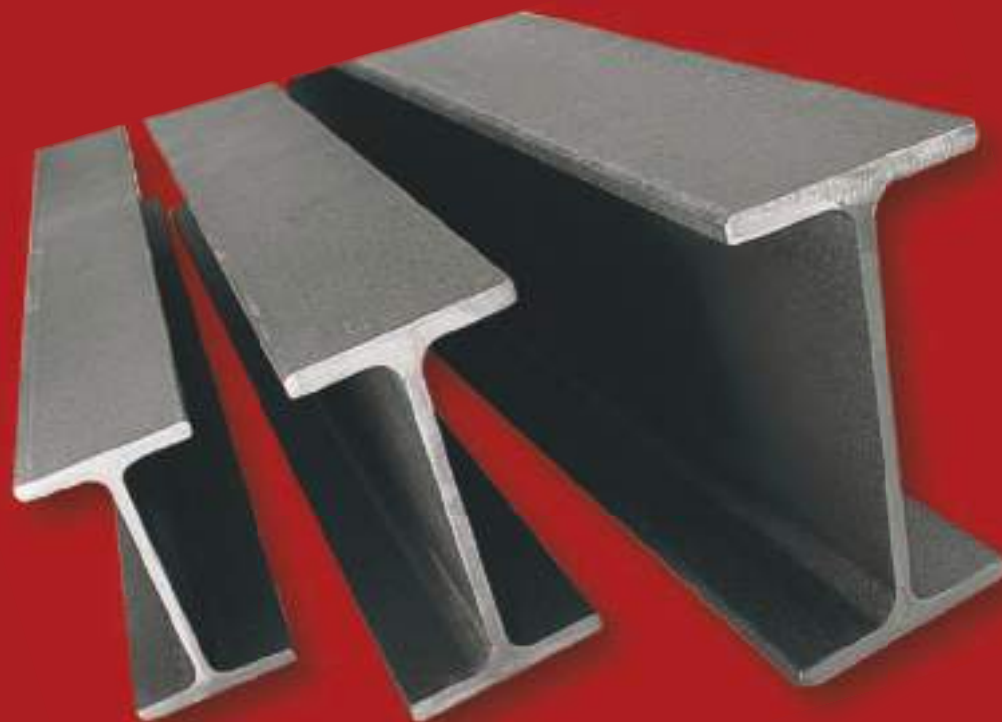
# BEAMS

## HEB BEAMS

SIZE
HE 100 B 100*100* 6 *10 MM * 6 M
HE 100 B 100*100* 6 *10 MM *12 M
HE 120 B 120*120* 6.5*11 MM *12 M
HE 140 B 140*140* 7 *12 MM *12 M
HE 160 B 160*160* 8 *13 MM * 6 M
HE 160 B 160*160* 8 *13 MM *12 M
HE 180 B 180*180* 8.5*14 MM *12 M
HE 200 B 200*200* 9 *15 MM * 6 M
HE 200 B 200*200* 9 *15 MM *12 M
HE 220 B 220*220* 9.5*16 MM *12 M
HE 240 B 240*240*10 *17 MM *12 M
HE 260 B 260*260*10 *17.5MM *12 M
HE 280 B 280*280*10.5*18 MM *12 M
HE 300 B 300*300*11 *19 MM *12 M
HE 320 B 320*300*11.5*20.5MM *12 M
HE 340 B 340*300*12 *21.5MM *12 M
HE 360 B 360*300*12.5*22.5MM *12 M
HE 400 B 400*300*13.5*24 MM *12 M
HE240B BE GULF 240*240*10*17MM*12M
HE300B BE GULF 300*300*11*19MM*12M

## HEE BEAMS

SIZE
HE 100 A 96*100* 5 * 8 MM * 6 M
HE 100 A 96*100* 5 * 8 MM *12 M
HE 120 A 114*120* 5 * 8 MM *12 M
HE 140 A 133*140* 5.5* 8.5MM *12 M
HE 160 A 152*160* 6 * 9 MM *12 M
HE 180 A 171*180* 6 * 9.5MM *12 M
HE 200 A 190*200* 6.5*10 MM *12 M
HE 220 A 210*220* 7 *11 MM *12 M
HE 240 A 230*240* 7.5*12 MM *12 M
HE 260 A 250*260* 7.5*12.5MM *12 M
HE 280 A 270*280* 8 *13 MM * 6 M
HE 280 A 270*280* 8 *13 MM *12 M
HE 300 A 290*300* 8.5*14 MM *12 M
HE 320 A 310*300* 9 *15.5MM *12 M
HE 340 A 330*300* 9.5*16.5MM *12 M
HE 400 A 390*300*11 *19 MM *12 M
HE 450 A 440*300*11.5*21 MM *12 M
HE 500 A 490*300*12 *23 MM *12 M
HE 800 A 790*300*15 *28 MM *12 M
HE200A BE GULF 190*200*6.5*10 MM*12M
HE220A BE GULF 210*220*7 *11MM *12M
HE240A BE GULF 230*240*7.5*12 MM *12M
HE360A BE GULF 360*300*10*17.5MM*12M
HE 300 A BE KOR 290*300* 8.5*14MM *12 M



# BEAMS

## IPE BEAMS

SIZE
IPE BEAM 80* 46* 3.8* 5.2 MM * 6 M
IPE BEAM 100* 55* 4.1* 5.7 MM * 12 M
IPE BEAM 120* 64* 4.4* 6.3 MM * 6 M
IPE BEAM 120* 64* 4.4* 6.3 MM * 12 M
IPE BEAM 140* 73* 4.7* 6.9 MM * 6 M
IPE BEAM 140* 73* 4.7* 6.9 MM * 12 M
IPE BEAM 160* 82* 5 * 7.4 MM * 6 M
IPE BEAM 160* 82* 5 * 7.4 MM * 12 M
IPE BEAM 180* 91* 5.3* 8 MM * 6 M
IPE BEAM 180* 91* 5.3* 8 MM * 12 M
IPE BEAM 200*100* 5.6* 8.5MM*6 M
IPE BEAM 200*100* 5.6* 8.5MM*12 M
IPE BEAM 220*110* 5.9* 9.2 MM * 6 M
IPE BEAM 220*110* 5.9* 9.2 MM * 12 M
IPE BEAM 240*120* 6.2* 9.8 MM * 12 M
IPE BEAM 270*135* 6.6*10.2 MM * 12 M
IPE BEAM 300*150* 7.1*10.7 MM * 12 M
IPE BEAM 330*160* 7.5*11.5 MM * 12 M
IPE BEAM 360*170* 8 *12.7 MM * 12 M
IPE BEAM 400*180* 8.6*13.5 MM * 12 M
IPE BEAM 400*180* 8.6*13.5 MM * 15 M
IPE BEAM 450*190* 9.4*14.6 MM * 12 M
IPE BEAM 550*210*11.1*17.2 MM * 12 M
IPE BEAM 600*220*12 *19 MM * 12 M
IPE BE GULF 300*150*7.1*10.7MM*6M
IPE BE GULF 300*150*7.1*10.7MM*12M

## IPE BEAMS

SIZE
IPE BE GULF 360*170*8*12.7MM*12M
IPE BE GULF 400*180*8.6*13.5MM*12M
IPE BE GULF 500*200*10.2*16MM*12M
IPE KOR 300*150* 7.1*10.7 MM * 12 M
IPE KOR 400*180* 8.6*13.5 MM * 12 M

## H-JIS BEAMS

SIZE
100*100 * 6 * 8 MM * 6 M
100*100 * 6 * 8 MM * 12 M
150*150 * 7 * 10 MM * 6 M
150*150 * 7 * 10 MM * 12 M
200*200 * 8 * 12 MM * 6 M
200*200 * 8 * 12 MM * 12 M
250*250 * 9 * 14 MM * 12 M
300*300 * 10 * 15 MM * 6 M
300*300 * 10 * 15 MM * 12 M
350*350 * 12 * 19 MM * 12 M
400*400 * 13 * 21 MM * 12 M
KOREA 100*100 * 6 * 8 MM*6M
KOREA 100*100 * 6 * 8 MM*12 M
(KOREAN) 250 * 250 *6 M
(KOREAN) 250 * 250 *12 M
BE KOR 300*300 * 10* 15 MM * 12 M
150*150 * 7 * 10MM*6M
150*150 * 7 * 10MM*12M
HJIS 250*250 * 9 * 14MM *6M



# BEAMS

## IPEAA BEAMS

SIZE
80* 46 * 4.1 * 3.1 MM * 6 M
100* 55 * 3.6 * 4.5 MM * 6 M
100* 55 * 3.6 * 4.5 MM * 12 M
120* 64 * 3.6 * 4.8 MM * 6 M
120* 64 * 3.6 * 4.8 MM * 12 M
140* 73 * 3.8 * 5.2 MM * 6 M
140* 73 * 3.8 * 5.2 MM * 12 M
160* 82 * 4.0 * 5.6 MM * 6 M
160* 82 * 4.0 * 5.6 MM * 12 M
180* 91 * 4.3 * 6.2 MM * 6 M
180* 91 * 4.3 * 6.2 MM * 12 M
200*100 * 4.5 * 6.7 MM * 6 M
200*100 * 4.5 * 6.7 MM * 12 M
220*110 * 6 M
220*110 * 12 M
240*120 * 6 M
GULF 80*46 *4.1*3.1MM*6M
GULF 100*55 *3.6*4.5MM*6M
GULF 100*55 *3.6*4.5MM*12M
GULF 120*64 *3.6*4.8MM*6M
GULF 120*64 *3.6*4.8MM*12M
GULF 140*73 *3.8*5.2MM*6M
GULF 140*73 *3.8*5.2MM*12M
GULF 160*82 *4*5.6MM*6M
GULF 160*82 *4*5.6MM*12M
GULF 180*91 *4.3*6.2MM*6M

## IPEAA BEAMS

SIZE
GULF 180*91 *4.3*6.2MM*12M
GULF 200*100*4.5*6.7MM*6M

## H BEAMS

SIZE
H BEAM 100X100X12
H BEAM 100X100X6.5
H BEAM 10X10X6MET
H BEAM 120X114X5X8 MM 12 MTR
H BEAM 120X120X6MT 6.5X11.5MM
H BEAM 12X12X12MT (11MX6.5M)
H BEAM 140X140X12"
H BEAM 150X150X12"
H BEAM 150X150X6.5
H BEAM 150X75X6
H BEAM 160X160X12
H BEAM 16X16X12MT (13MX8M)
H BEAM 180X180X12
H BEAM 20X20X12 8MM
H BEAM 20X20X12MT (15MX9M)
H BEAM 20X20X6 15X9MM
H BEAM 250X250X9X14MMX12MET
H BEAM 30X30 10X50 12MET
H BEAM 30X30X12MTR (15.5MX9.5M)



# BEAMS

## I-JIS BEAMS

SIZE
198*99* 4.5* 7 MM * 6 M
198*99* 4.5* 7 MM * 12 M
248*124* 5 * 8 MM * 6 M
248*124* 5 * 8 MM * 12 M
250*125* 6 * 9 MM * 12 M
298*149* 5.5* 8 MM * 6 M
298*149* 5.5* 8 MM * 12 M
300*150* 6.5* 9 MM * 12 M
346*174* 6 * 9 MM * 6 M
346*174* 6 * 9 MM * 12 M
350*175* 7 *11 MM * 12 M
396*199* 7 *11 MM * 6 M
396*199* 7 *11 MM * 12 M
400 * 200 * 13 * 8 MM * 12 M
496*199* 9 *14 MM * 12 M
KOREA 198* 99* 4.5 *7 MM*6 M
KOREA 198* 99* 4.5 *7MM*12M
KOREA 248*124* 5 * 8MM*6M
KOREA 248*124* 5 * 8 MM*12M
KOREA 250*125* 6 * 9 MM*12M
KOREA 298*149* 5.5*8 MM* 6 M
KOREA 298*149* 5.5*8 MM*12 M
KOREA 300*150* 6.5*9MM*12 M
KOREA 346*174* 6 * 9 MM* 6 M
KOREA 346*174* 6 * 9 MM*12 M
KOREA 396*199* 7 *11 MM* 6 M

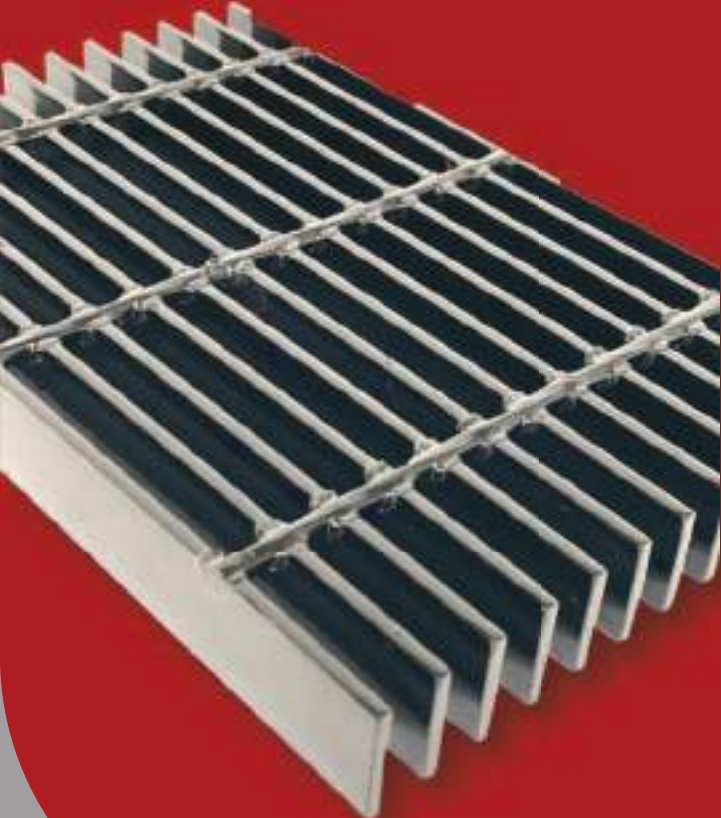
## I-JIS BEAMS

SIZE
KOREA 396*199* 7 *11MM*12M
KOREA 350*175* 7 *11MM*12M
KOREA 400*200*13 * 8 MM*12 M
GULF 248*124* 5 * 8 MM* 6 M
GULF 248*124* 5 * 8 MM*12 M
GULF 298*149* 5.5* 8 MM* 6 M
GULF 298*149* 5.5* 8 MM*12 M
GULF 346*174*6 * 9 MM*12 M
GULF 396*199* 7 * 11 MM*12 M
GULF 400*200*13 * 8 MM*12 M

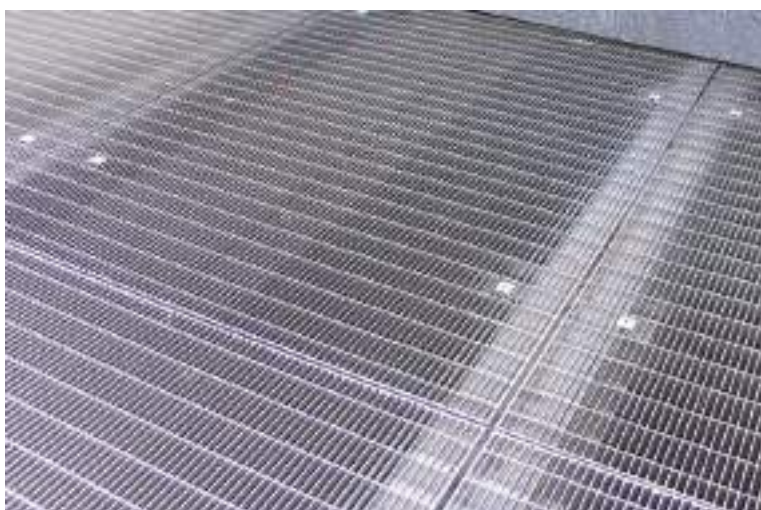
## C-CHANNEL

SIZE
7.5*4*1.5 CM *1.5 MM * 5 M
7.5*4*1.5 CM *1.5 MM * 6 M
10 *5*1.5 CM *1.4 MM * 5 M
10 *5*1.5 CM *1.4 MM * 6 M
10 *5*1.5 CM *1.5 MM * 5 M
10 *5*1.5 CM *1.5 MM * 6 M
10 *5*1.5 CM *1.5 MM * 7 M
10 *5*1.5 CM *1.8 MM * 5 M
10 *5*1.5 CM *1.8 MM * 6 M
10 *5*1.5 CM *2 MM * 5 M
10 *5*1.5 CM *2 MM * 6 M





## GRATINGS



Gratings are made as per order basis, and required sizes by clients



# STAINLESS STEEL

<b>-S S Sheets</b>	<b>-1</b>
<b>-Tubes</b>	<b>-2</b>
<b>-Bars</b>	<b>-3</b>
<b>-Glass Fitting Accessories</b>	<b>-4</b>
<b>-Fabrication Fitting Accessories</b>	<b>-5</b>

# SHEETS

THICKNESS	WIDTH MM	LENGTH MM	GRADE	FINISH
0.5	1000, 1500	2000, 3050	201, 304, 316	BA/PE, NO.4/PE, NO.8/DPE, 2B/PE, BA/PE, NO.4/PE, NO.8/DPE
0.6	1000, 1500	2000, 3050	201, 304, 430	BA/PE, NO.4/PE, NO.8/DPE, BA/PE, BA/PE, NO.4/PE
0.7	1000, 1220	2000, 3050	304, 430	BA/PE, NO.4/PE, NO.4, NO.8/DPE, BA/PE, NO.4/PE
0.8	1000, 1220	2000, 3050	201, 304, 430	BA/PE, NO.4/PE, NO.8, BA/PE, NO.4/PE
0.9	1220, 1500	2440, 3050	201, 304, 430	NO.8, BA/PE, NO.4/PE, NO.8/DPE, BA/PE
1.0	1000, 1500	2000, 3050	201, 304, 316, 430	BA/PE, HL/PE, NO.4/PE, NO.8, 2B/PE, BA, NO.4, NO.8/DPE
1.2	1000, 1500	2000, 3050	201, 304, 316, 430	2B, BA/PE, HL/PE, NO.4/PE, NO.8, NO.8/DPE, BA, BA/PE, NO.4/PE
1.5	1000, 1220	2000, 3050	201, 304, 316, 430	NO.4/PE, NO.8/DPE, 2B/PE, BA, NO.4, NO.4/PE, NO.8, NO.8/PE
2.0	1220, 1500	2440, 3050	201, 304, 316	NO.8/DPE, 2B, NO.4/PE, 2B/PE
3.0	1220, 1500	2440, 3000	201, 304, 316	2B, NO.4/PE, 2B/PE
4.0	1220, 2000	2440, 6000	201, 304, 316	NO.1/PE, NO.4/PE, 2B/PE, NO.1
5.0	1220, 2000	2440, 6000	304, 316	NO.1/PE, NO.1, NO.1/PE
6.0	1220	2440	304, 316	NO.1, NO.1
8.0	1220	2440	304, 316	NO.1/PE, NO.1
10.0	1220, 2000	2440, 6000	304, 316	NO.1, NO.1, NO.1/PE
12.0	1220	2440	304, 316	2B, NO.1
15.0	1220	2440	304	NO.4/PE



# TUBES

## RECTANGULAR TUBE

SIZE W MM	SIZE H MM	THICKNESS MM	LENGTH M	GRADE	FINISH
20.0	10.0	1.2-1.5	6	201, 304	600G, 180G HL, 400G,
20.0	40.0	1.2-1.5	6	304	180G, 400G
30.0	15.0	1.2-1.5	6	201, 304	180G, 400G, 600G
30.0	20.0	1.2	6	201	180G, 600G
40.0	20.0	1.2-1.5	6	201, 216	180G HL
50.0	25.0	1.2-1.5	6	304	180G, 400G HL
60.0	30.0	1.2-1.5	6	201, 304, 316	400G, HL
80.0	40.0	1.2-2.0	6	201, 304, 316	180G HL, 180G, 400G, 600G
100.0	50.0	1.5-2.0	6	304	HL 180G

## SQUARE TUBE

SIZE W MM	SIZE H MM	THICKNESS MM	LENGTH M	GRADE	FINISH
10.0	10.0	1.2	6	304	HL
15.0	15.0	1.2	6	201, 304	SS, HL
16.0	16.0	1.2-1.5	6	201	SS TUBE
20.0	20.0	1.2-2.0	6	201, 304, 316	HL, 180, 400G, 600G
25.0	25.0	1.2-1.5	6	201, 304	180G, 400G, 600G
30.0	30.0	1.2-2.0	6	201, 304, 316	HL 180G, 400G, 600G
40.0	40.0	1.0-2.0	6	201, 304, 316	180G, 400G, 600G, GOLD MIR, HL
50.0	50.0	1.2-2.0	6	201, 304, 316	180G, 400G HL
60.0	60.0	1.5-4.0	6	201, 304	HL SS 180G, 400G, 600G
80.0	80.0	1.5-2.0	6	304	400G HL
100.0	100.0	2.0-3.0	6	304	HL



# BARS

## ROUND BAR

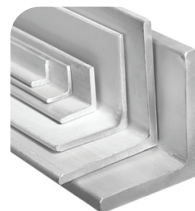
GRADE 304, 316



SIZE MM	LENGTH M
4.0	6
6.0	6
8.0	6
10.0	6
12.0	6
14.0	6
16.0	6
18.0	6
20.0	6

## ANGLE BAR

GRADE 304, 316



SIZE H MM	SIZE W MM	THICKNESS
25.0	25.0	3.0
30.0	30.0	3.0
40.0	40.0	4.0
50.0	50.0	5.0
60.0	60.0	6.0

GRADE 304, 316



## SQUARE BAR

SIZE H MM	SIZE W MM	LENGTH M
8.0	8.0	6
10.0	10.0	6
12.0	12.0	6

GRADE 304, 316



## FLAT BAR

SIZE MM	THICKNESS	LENGTH M
25.0	3.0, 5.0	6
30.0	3.0, 5.0	6
40.0	4.0, 5.0	6
50.0	5.0	6
60.0	6.0	6



**BASCO**  
QUALITY GLASS ACCESSORIES

# GLASS DOOR FITTING



FLOOR SPRING MACHINE



L PATCH MALE



TOP PATCH



L PATCH FEMALE



BOTTOM PATCH



TOP PATCH LOCK



BOTTOM PATCH LOCK



SLIDE DOOR SET



DOOR HANDLE



## FITTING ACCESSORIES

### GLASS HOLDER



DESCRIPTION	FINISH	MATERIAL
55*53*25MM, FOR 10MM GLASS	CHROME PLATED	304, 316
54.4*59.3*26, FOR 10MM GLASS	CHROME PLATED	304, 316
55*53*25MM, FOR 10MM GLASS	MAT	304, 316
55*53*25MM, FOR 12MM GLASS	MAT	304, 316

### FLANGE COVER



DESCRIPTION	FINISH	MATERIAL
FOR ROUND PIPE 51MM, OD=18, 25, 38, 63, 105MM THICKNESS=0.5, 0.8 MM	POLISHED	304, 316

### SINK



DESCRIPTION	FINISH	MATERIAL
40X40, THICKNESS:0.75MM, DEPTH : 195MM	POLISHED	304
50X50, THICKNESS:0.75MM, DEPTH: 195MM	POLISHED	304

### ELBOW



SIZE MM	WALL THICKNESS	ARC LENGTH	GRADE	FINISH
Ø50.8	LABEL 1.5, ACTUAL 1.35	145, 125	202, 304, 316	POLISHED
Ø50.8	LABEL 1.2, ACTUAL 1.1	125	202, 304, 316	POLISHED
Ø38.0	LABEL 1.5, ACTUAL 1.35	100	304, 316	POLISHED
Ø19.0	LABEL 1.2, ACTUAL 1.0		304, 316	POLISHED
Ø25.0	ACTUAL 1.5		304, 316	POLISHED
Ø31.8	LABEL 1.5, ACTUAL 1.5	85	304, 316	POLISHED



## FITTING ACCESSORIES

### BALL WITH BAS



DESCRIPTION	FINISH	MATERIAL
BASE IS FOR PIPE 50.8MM, BALL SIZE IS 80.0MM	POLISHED	201, 304, 316
BALL SIZE IS 38.1MM	POLISHED	201, 304, 316

### SS BALL



DESCRIPTION	FINISH	MATERIAL
BALL SIZE 6 CM HOLE 25 MM	POLISHED	304

### SQUARE FLANGE



DESCRIPTION	FINISH	MATERIAL
86X86 HOLE 41X41	POLISHED	201
50X50	POLISHED	304
40X40	POLISHED	

### MULTY STEP COVER



DESCRIPTION	FINISH	MATERIAL
25.0 HOLE	POLISHED	201
31.80 HOLE	POLISHED	201, 304
51.0 HOLE	POLISHED	201, 316





## FITTING ACCESSORIES

### BASED PLATE



DESCRIPTION	FINISH	MATERIAL
60X60X12, 4MM BASED PLATE, STRONG ONE	POLISHED	304, 316

### BASE PLATE



DESCRIPTION	FINISH	MATERIAL
38.0, 50.8, 63.5MM	2B(NON-POLISHED)	304, 316

### STAIR HINGE



DESCRIPTION	FINISH	MATERIAL
38.0MM		304, 316
50.0MM		304, 316

### PIPE CONNECTOR



DESCRIPTION	FINISH	MATERIAL
12, 16, 19, 25 MM		304, 316



## FITTING ACCESSORIES

### GLASS CLIP



DESCRIPTION	FINISH	MATERIAL
55*53*25MM, FOR 10MM GLASS	CHROME PLATED	ZINC ALLOY, 304
54.4*59.3*26, FOR 10MM GLASS	CHROME PLATED	ZINC ALLOY, 316
55*53*25MM, FOR 10MM GLASS	MAT	ZINC ALLOY
55*53*25MM, FOR 12MM GLASS	MAT	ZINC ALLOY

### SUQARE GLASS CLIP



DESCRIPTION	FINISH	MATERIAL
10, 12MM	POLISHED	304, 316

### SUQARE GLASS HOLDER



DESCRIPTION	FINISH	MATERIAL
10, 12MM	POLISHED	304, 316

### GLASSCLIP SUQARE T



DESCRIPTION	FINISH	MATERIAL
10, 12MM	POLISHED	304, 316





## FITTING ACCESSORIES

### GLASS HINGES



DESCRIPTION	FINISH	MATERIAL
(WALL TO GLASS) 10, 12 MM	POLISHED	304, 316, ZINC

### L GLASS CLIP



DESCRIPTION	FINISH	MATERIAL
(WALL TO GLASS) 10, 12 MM	POLISHED	304, 316

### GLASS CONNECTOR



DESCRIPTION	FINISH	MATERIAL
10, 12 MM	POLISHED	304, 316

### GLASS CLIP



DESCRIPTION	FINISH	MATERIAL
10, 12 MM	POLISHED	304, 316



# FITTING ACCESSORIES

## 4 WAYS GLASS CONECTOR



DESCRIPTION	FINISH	MATERIAL
10, 12 MM	POLISHED	304, 316

## GLASS HINGES



DESCRIPTION	FINISH	MATERIAL
GLASS TO GLASS 10, 12 MM	POLISHED	304, 316

## SPACER



DESCRIPTION	FINISH	MATERIAL
8, 10, 12 MM	POLISHED	304, 316

## ROUND GLASS HOLDER



DESCRIPTION	FINISH	MATERIAL
10, 12 MM	POLISHED	304, 316

# FITTING ACCESSORIES



## ADJUSTABLE ELBOW



DESCRIPTION	FINISH	MATERIAL
19, 25, 50.8MM	POLISHED	304, 316

## SS DOOR HANDLE



DESCRIPTION	FINISH	MATERIAL
SS DOOR HANDLE ALL SIZES	POLISHED	304, 316

## WALL TO PIPE



DESCRIPTION	FINISH	MATERIAL
19, 25 MM	POLISHED	304, 316, ZINC

## SPACER



DESCRIPTION	FINISH	MATERIAL
1"	POLISHED	304, 316
3/4"	POLISHED	304, 316

# FITTING ACCESSORIES

## DOM CAP



DESCRIPTION	FINISH	MATERIAL
19, 25, 38 50.8MM	POLISHED	304, 316

## CONNECTOR



DESCRIPTION	FINISH	MATERIAL
50.8MM	POLISHED	304,

## OPEN BRACKET



DESCRIPTION	FINISH	MATERIAL
38.1, 50.8 MM	POLISHED	304, 316

## CLOSE BRACKET

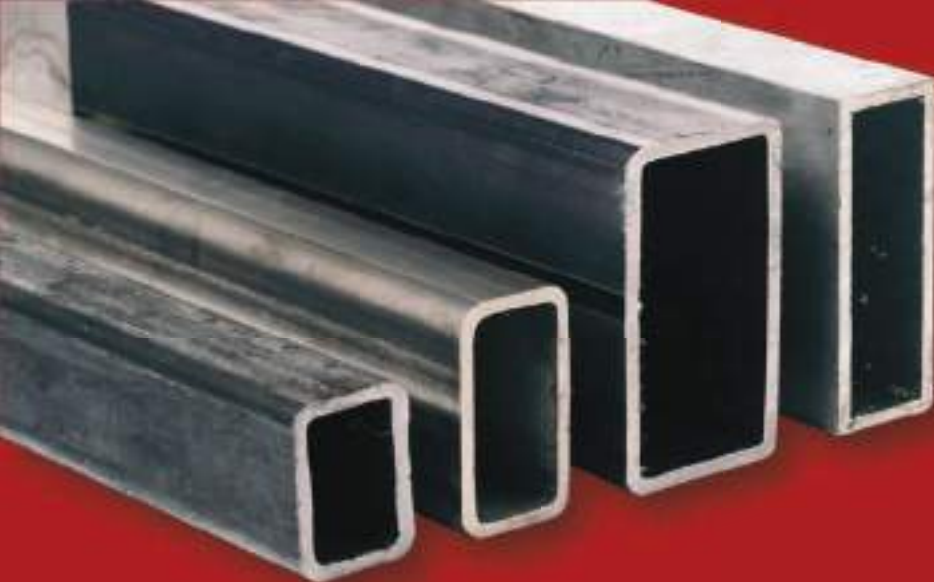


DESCRIPTION	FINISH	MATERIAL
38.1, 50.8 MM	POLISHED	304, 316



# GALVANIZED IRON

<b>-Tubes</b>	<b>-1</b>
<b>-Pipes</b>	<b>-2</b>
<b>-Sheets</b>	<b>-3</b>
<b>-Prepainted Currugated Sheet</b>	<b>-4</b>



# GALVANIZED TUBES

## SQUARE TUBE

SIZE (MM)	LENGTH (METER)	THICKNESS (MM)
12X12	6	1.2
16X16	6	1.2 - 1.5
20X20	6	1.2 - 3.0
25X25	6	1.2 - 3.0
30X30	6	1.2 - 3.0
40X40	6	1.2 - 5.0
50X50	6	1.2 - 5.0
60X60	6	1.2 - 5.0
70X70	6	1.2 - 5.0
80X80	6	1.2 - 5.0
100X100	6	1.2 - 5.0
120X120	6	2.0 - 5.0
150X150	6	4.0 - 8.0

## RECTANGULAR TUBE

SIZE (MM)	LENGTH (METER)	THICKNESS (MM)
25X10	6	1.2
30X15	6	1.2 - 2.0
40X10	6	1.2 - 3.0
40X20	6	1.5 - 3.0
50X25	6	1.5 - 3.0
60X30	6	1.2 - 3.0
80X40	6	1.2 - 5.0
100X50	6	1.2 - 5.0
100X200	6	2.0 - 5.0
120X60	6	2.0 - 5.0
150X100	6	3.0 - 8.0



# GALVANIZED PIPES

## HOLLOW SECTION CIRCULAR

NOMINAL DIAMETER (INCH)	OUTSIDE DIAMETER (INCH)	THICKNESS (MM)	LENGTH (METER)
1/2	0.840	0.8 - 2.8	6
3/4	1.050	0.8 - 2.9	6
1"	1.315	0.8 - 3.8	6
1" 1/4	1.660	0.8 - 4.0	6
1" 1/2	1.900	0.8 - 4.0	6
2"	2.375	0.9 - 6.0	6
1" 1/2	2.992	1.0 - 6.0	6
3"	3.500	1.2 - 6.0	6
3" 1/2	4.000	1.5 - 6.0	6
4"	4.500	1.5 - 6.0	6
5"	5.563	2.0 - 6.0	6
6"	6.626	2.0 - 6.0	6





## GALVANIZED SHEET

SIZE (MM)	LENGTH (MM)
0.5	1220 x 2440
0.6	1220 x 2440
0.7	1220 x 2440
0.8	1220 x 2440
0.9	1220 x 2440
1.0	1220 x 2440
1.2	1220 x 2440
1.5	1220 x 2440
1.8	1220 x 2440
2.0	1220 x 2440
2.8	1220 x 2440
3.0	1220 x 2440
4.0	1220 x 2440

# PREPAINTED CORRUGATED SHEET

THICKNESS (MM)	WIDTH (M)	LENGTH (M)
0.32	1.0	1.0 - 9.5
0.35	1.0	1.0 - 9.5
0.4	1.0	1.0 - 9.5
0.5	1.0	1.0 - 9.5
0.7	1.0	1.0 - 9.5

## LOCATIONS

### HEAD OFFICE - KSA

Al - Qahtani Business Tower  
Khodariya, Dammam 31434. KSA  
Tel: +966 13 88 66 999,  
+966 13 83 23 000

### HEAD OFFICE - UAE

Suite 51, Qasis Center  
Sheikh Zayed Road, Box-76736, Dubai,UAE  
Tel: +971 43218850,  
+971 529109511

#### KINGDOM OF SAUDI ARABIA

DAMMAM  
AL KHOBAR  
JUBAIL  
AL HASSA  
RIYADH  
AL QASSIM  
JEDDAH

#### UNITED ARAB EMIRATES

AL AIN - ABUDHABI  
AJMAN  
RAS AL KHAIMAH

#### SULTANATE OF OMAN

AL MAABILAH - MUSCAT

#### KINGDOM OF BAHRAIN

SALMABAD

#### INDIA

BANGALORE



🌐 [www.steelforceco.com](http://www.steelforceco.com)  
✉ [Info@steelforceco.com](mailto:Info@steelforceco.com)